

Singapore Management University

Institutional Knowledge at Singapore Management University

Research Collection School Of Computing and Information Systems

School of Computing and Information Systems

6-2021

On predicting personal values of social media users using community-specific language features and personal value correlation

Amila SILVA

Singapore Management University, amilasilva@smu.edu.sg

Pei Chi LO

Singapore Management University, pclo.2017@phdcs.smu.edu.sg

Ee-Peng LIM

Singapore Management University, eplim@smu.edu.sg

Follow this and additional works at: https://ink.library.smu.edu.sg/sis_research



Part of the [Databases and Information Systems Commons](#), and the [Social Media Commons](#)

Citation

SILVA, Amila; LO, Pei Chi; and LIM, Ee-Peng. On predicting personal values of social media users using community-specific language features and personal value correlation. (2021). *Proceedings of the 15th 2021 International AAAI Conference on Web and Social Media 2020 (ICWSM2021): June 7-10, Virtual*. 680-690.

Available at: https://ink.library.smu.edu.sg/sis_research/6055

This Conference Proceeding Article is brought to you for free and open access by the School of Computing and Information Systems at Institutional Knowledge at Singapore Management University. It has been accepted for inclusion in Research Collection School Of Computing and Information Systems by an authorized administrator of Institutional Knowledge at Singapore Management University. For more information, please email cherylds@smu.edu.sg.

On Predicting Personal Values of Social Media Users using Community-Specific Language Features and Personal Value Correlation

Amila Silva¹, Pei-Chi Lo², and Ee-Peng Lim²

¹School of Computing and Information Systems, The University of Melbourne, Australia

²School of Computing and Information System, Singapore Management University, Singapore
 amila.silva@student.unimelb.edu.au, {pclo.2017@phids., eplim@}.smu.edu.sg

Abstract

Personal values have significant influence on individuals' behaviors, preferences, and decision making. It is therefore not a surprise that personal values of a person could influence his or her social media content and activities. Instead of getting users to complete personal value questionnaire, researchers have looked into a non-intrusive and highly scalable approach to predict personal values using user-generated social media data. Nevertheless, geographical differences in word usage and profile information are issues to be addressed when designing such prediction models. In this work, we focus on analyzing Singapore users' personal values, and developing effective models to predict their personal values using their Facebook data. These models leverage on word categories in Linguistic Inquiry and Word Count (LIWC) and correlations among personal values. The LIWC word categories are adapted to non-English word use in Singapore. We incorporate the correlations among personal values into our proposed Stack Model consisting of a task-specific layer of base models and a cross stitch layer model. Through experiments, we show that our proposed model predicts personal values with considerable improvement of accuracy over the previous works. Moreover, we use the stack model to predict the personal values of a large community of Twitter users using their public tweet content and empirically derive several interesting findings about their online behavior consistent with earlier findings in the social science and social media literature.

Introduction

Motivation. *Personal values* (or simply, values) express what is most important to people in life. Every individual holds personal values (e.g., achievement, security, benevolence) with varying degrees of importance. A particular personal value may be very important to one person but unimportant to another. Personal values influence a person's attitude and behavior. Although there are various approaches (Hofstede 1984; Braithwaite and Law 1985; Inglehart 1997) to measure personal values, the one proposed by Schwartz in (Schwartz 1992) is widely used by psychology researchers. Schwartz's theory of basic human values (Schwartz 2012) defines 10 specific personal values

which can be measured by a specially designed questionnaire. These personal values are: Power, Achievement, Hedonism, Stimulation, Self-Direction, Universalism, Benevolence, Tradition, Conformity, and Security (see Fig. 1). These personal values are further grouped into five higher order personal values, namely: *Self-enhancement*, *Hedonism*, *Openness*, *Self-transcendence*, and *Conservation*. The questionnaire includes 56 items (Schwartz 2003) to measure the value dimensions¹. However, it is costly and privacy-intrusive to get people to complete the questionnaire. Researchers thus seek other more scalable alternative approaches to obtain personal values. Among these approaches, prediction of personal values from users' social media content is very promising and has been studied in only a few works (Boyd et al. 2015; Chen et al. 2014). Because, such descriptors related personality could be subsequently served as features for the downstream applications like personalized recommendations (Kern et al. 2019).

There also exists some software products to predict personal values based on content², they are based on models trained on labeled users from specific geographical region and culture. These models may not predict accurately for another community of users due to: (a) different personal value profile distribution among new users compared with those used in training the models; and (b) some word use patterns of new users very different from that of training data. While the above limitations are well understood, there has not been much research to illustrate the impact of community specific language and personal value profile distribution to personal values prediction using user-generated content.

Research Objectives. This work aims to show that accurate value prediction has to leverage on word usage patterns specific to the region the users come from. A value prediction model trained using the content from another region may yield poorer performance when applied to the target region even the two regions have large lexicon overlap. At times, the prediction accuracy may not be high enough for data science studies on a large social media user population. The important research questions to address in this

¹To the best of our knowledge, other works also focus on analyzing and predicting high-order personal values (Mukta, Ali, and Mahmud 2017; Chen et al. 2014).

²<https://www.ibm.com/watson/services/personality-insights/>

work are therefore: (a) how to cope with regional differences in word usage patterns? (b) how to develop accurate models to leverage features and task knowledge? (c) how to deploy value prediction models to gain insights about a large social media user population?

To answer the above questions with concrete illustration, we focus on personal values of users from Singapore which has an ethnic composition of 76% Chinese, 15% Malays, 7% Indians and others. Most Singapore users are asians who may have personal value profiles different from users from the US and European communities. The languages used in the Singapore community has major content differences which may render the previous models less ineffective. To study the personal value profiles of Singapore users and to develop personal value prediction models using their social media data, we have collected the Facebook content generated by a group of Singapore users. According to Alexa at the time of this study, Facebook is the most visited social media site in Singapore. The users in this group also completed the Schwartz’s personal value questionnaire so as to have their personal values determined.

In developing the prediction models, we explore several novel ideas. The first idea is to use a Singapore variant of *Linguistic Inquiry and Word Count* (LIWC) instead of the original LIWC to derive features adapted to the linguistic characteristics of Singapore users. LIWC consists of word categories that characterize the linguistics profiles of users. The second idea leverages on the positive and negative correlations between personal values according to the *circular structure of Schwartz’s Personal Values* (Schwartz 1992) as shown in Fig. 1. This work proposes a method to exploit the circular structure of personal values to boost their prediction accuracy. Both idea have not been studied in any previous works on personal value prediction.

In this work, we further illustrate a scalable way to analyse online behavior of a large group of Twitter users using our personal value prediction model trained using Facebook data. Despite the analysis involves different social media data, we empirically show that the predicted labels of our model uphold the inter-relationships among personal values (Schwartz 1992), highlight some hypotheses about user online behaviors in Twitter, and compare them with those reported in related works (Marshall et al. 2018; Jin 2013; Huberman, Romero, and Wu 2009).

Contributions. In summary, the following are the novel contributions of this work:

- We introduce a novel dataset collected for Singapore Facebook users with the ground truth labels of Schwartz’s personal values³ Singapore users represent a unique user community with its own linguistic characteristics. To our best knowledge, we are the first to analyze and predict personal values using a community-specific LIWC incorporating these linguistic characteristics. This is known as the *Singapore-LIWC* or S-LIWC.
- We propose a new personal value prediction model known as *Stack Model* to improve the prediction accuracy of

³The anonymous dataset is shared via <https://bit.ly/39FVSzL>.



Figure 1: Circular Structure of Schwartz’s Personal Values (Maio 2010)

the personal values. The key idea is to exploit the circular structure of Schwartz’s personal values. This Stack Model is a two-layer model which supports features derived from both LIWC and S-LIWC. The model yields accuracy higher than most of the earlier state-of-the-art prediction models.

- Instead of using social media post content only, we investigate user representation using features from Facebook profile information (i.e., interests and groups). Empirically, we show that the profile features are strong features to predict personal values.
- We conduct a data science study of the personal values of a large community of Singapore Twitter users (85,000 users) who share their tweet content publicly, and correlate the personal values with their online behavior. In this study, our proposed stack model discovers interesting online user behavior with specific personal values. This is a major breakthrough extending the study of personal values to a large user community.

Related Works

We divide the related works into two categories, namely: (a) *personal value prediction*; and (b) *personality prediction*.

Personal Value Analysis and Prediction. Personal values have been studied in the context of decision making and personal interests. In (Verplanken and Holland 2002), the effect of individual’s personal values over their decision process is analyzed. Hsieh et al. studied the relationship between personal values and personal interests (Hsieh et al. 2014). There are a few previous efforts (Chen et al. 2014; Boyd et al. 2015; Maheshwari et al. 2017) to analyze the relationship between personal values and word usage. In (Chen et al. 2014), Chen et al. uses Reddit as the social media platform to collect user generated online context while Boyd explicitly asks users to produce content (Boyd et al. 2015). LIWC word categories and modeled topics are used in (Chen et al. 2014) and (Boyd et al. 2015) respectively to capture content features. Both works show the correlation

analysis between word usage and personal values. Chen et al. further analyzes the prediction potential of personal values using simple binary classification models such as Logistics Regression, SVM, and Naive Bayes. Nevertheless, there has been little work on personal value prediction for user communities using region/culture-specific languages.

Personal value prediction using Facebook data is new. In addition to the word content in posts, Facebook profiles consist of other user generated profile data such as interests, group affiliations, and activities. These profile data however have not yet be used as features for personal values prediction in similar previous works (Chen et al. 2014; Boyd et al. 2015). There also has not been any other previous works on large-scale data science study of personal values and online behavior.

Personality Prediction. Prediction of other psychological attributes such as personality (Golbeck, Robles, and Turner 2011), and dark triad personality traits (Sumner et al. 2012) based on word usage have been studied in recent years. There were several efforts (Grankvist and Kajonius 2015; Parks-Leduc, Feldman, and Bardi 2015) to analyze the relationship between personal values and personality traits. In addition, researchers have studied specific human behavior, thinking pattern or preference using personal values or personality traits (Mukta et al. 2017; Hsieh et al. 2014; Verplanken and Holland 2002). Mukta et al. analyzed the prediction potential of individuals' movie genre preferences using personality and personal values (Mukta et al. 2017). Most of the previous efforts generally use content features with simple classification models to perform prediction (Chen et al. 2014; Sumner et al. 2012). To the best of our knowledge, none of them exploits the circular structure among personal values to improve the prediction potential of personal values. Golbeck et al. proposed a few discrete features extracted from Facebook profile information for predicting personality (Golbeck, Robles, and Turner 2011).

Datasets and Data Analysis

In this paper, we use two datasets covering users from the same community. The first dataset is a small Facebook dataset with ground truth personal value labels for training prediction models. The second dataset is a large Twitter dataset covering more than 80K users and their tweet and social network data. The Twitter dataset allows us to predict the personal values of the target Twitter user community and to conduct a large-scale study of user behavior for users of different personal values.

Facebook Dataset Construction. Social media datasets with ground truth personal value labels for research are generally not available. We therefore construct our own dataset by recruiting 125 undergraduate students (42 males and 83 females) to contribute their Facebook data and personal values labels by completing the Schwartz Value Survey (SVS) (Schwartz 1992). Each participant received a small monetary reward for the participation.

The Schwartz Value Survey (SVS) is currently the most widely used personal value assessment instrument (Caprara et al. 2006; Chen et al. 2014; Boyd et al. 2015; Mukta et

al. 2017). This survey requires participants to rate the importance of 56 value items as guiding principles in their life within the scale from -1 to 7. To remove individual differences in rating, we subtract every user's original ratings across all personal values by the average of all ratings of the user. In this way, all users after the above adjustment share the same average rating of 0. This is the same technique used in previous works (Chen et al. 2014) to preprocess the ratings, thus we follow the same for the comparison purposes.

Along with the survey, participants shared with the research team their Facebook profile archives, which consist of Facebook posts and other profile information such as gender, preferences, and network details. The 125 users together have a total of 383,335 posts which were posted within the time span from the 4th quarter of 2007 to 1st quarter of 2018. They are required to remove sensitive posts before handing their data to the research team. The least and most prolific users have 12 posts and 20971 posts respectively (Avg. number of posts per user = 3067). All the users had been members of Facebook for at least 18 months at the end of year 2017. Personal values are generally considered as rather stable broad psychological attribute (Rokeach 1973; Schwartz 1992) compared to other similar attributes such personality traits. Hence it is still valid to analyze individuals' personal values using their older posts.

To check the *internal consistency* of survey results, we calculated Cronbach's alpha (Cronbach 1951) for each higher-order value dimension. The alpha values range from 0.73 to 0.86 (even higher) for the 5 higher-level personal values. These results are considered quite high and far better than that derived from the dataset used in (Chen et al. 2014).

To further ensure that the dataset is well collected, we compare the statistics of our dataset with that of a dataset used in (Chen et al. 2014). According to Table 1, most of the statistical figures of our dataset are similar to that of dataset in (Chen et al. 2014). In both datasets, the mean value for Self-Enhancement and Conservative are negative and it is positive for the rest. Highest variance between users is observed for the dimension of Hedonism in both datasets. On the other hand, Table 1 also reveals that our dataset has low mean values for all the personal value dimensions except for Conservative compared to the previous dataset (Chen et al. 2014). This suggests that Singapore users are highly driven by the goals like acceptance of tradition and customs, safety and stability of society, and relationship. This also highlights the importance of this research, which is done for a specific user community to yield more accurate prediction results and findings.

Most of the correlations between value dimensions are also similar between the two datasets in terms of sign and magnitude (e.g., Self-Transcendence vs Self-Enhancement, Conservative vs Openness to Change, and Conservative vs Hedonism). The correlation values, which are different between our Facebook dataset and the (Chen et al. 2014)'s dataset can also be explained using the circular structure of the Schwartz's personal values. For example, our dataset shows a significant positive correlation between self-enhancement and hedonism while it is a weak negative correlation in (Chen et al. 2014)'s dataset. Between the two,

	Our Dataset						Reddit Dataset (Chen et al. 2014)					
	Mean	Std Dev	Correlations				Mean	Std Dev	Correlations			
			SE	CO	OC	HE			SE	CO	OC	HE
ST	0.30	0.50	-0.63	0.10	-0.28	-0.54	0.85	0.63	-0.58	-0.20	-0.07	-0.23
SE	-0.63	0.77		-0.32	0.09	0.33	-0.50	0.73		-0.25	-0.19	-0.02
CO	-0.31	0.58			-0.65	-0.40	-0.86	0.66			-0.66	-0.34
OC	0.04	0.80				0.27	0.44	0.60				0.61
HE	0.01	1.18					0.26	0.95				

Table 1: Comparison between the statistics of our Facebook dataset and Reddit dataset (Chen et al. 2014) (ST=Self-Transcendence, SE=Self-Enhancement, CO=Conservative, OC=Openness to Change, HE=Hedonism. Significant correlations are shown in boldface.)

Post Statistics	Total Tweets	9,499K	
	Average Tweets per user	111	
Network Statistics	Network Type	Friend	Follower
	Number of edges	1,585,060	2,988,157

Table 2: Statistics of the Twitter dataset

positive correlation is more consistent with the personal values theory as Self-Enhancement and Hedonism are closer to each other in the circumplex structure. Hence, we can conclude that our dataset is reasonably well-collected and it complies with the circular structure of Schwartz’s personal values, which will be exploited in our subsequently proposed model for accurate prediction.

Twitter Dataset Construction. To conduct a larger-scale study of personal values for users from the Singapore community, we collected *public tweets* posted by 85,308 Twitter users based in Singapore during the 6 months period from January 2017 to June 2017. The dataset was constructed by first identifying a seed set of well known Twitter users based in Singapore. By crawling their following links, we reached out to other users who are also based in Singapore. We repeated the steps until the user set does not increase by size. In addition to the tweets, the Twitter network between these users (i.e., followers, friends) was also extracted. All these post and social network data are subsequently used in our user behavioral study. The descriptive statistics of this dataset are shown in Table 2.

Proposed Prediction Models

Task Definitions

By completing the SVS questionnaire, every user u has a ground truth score for each personal value p denoted by $v_{u,p}$. In this paper, we focus on high-order personal values, namely: Self-Transcendence, Self-Enhancement, Conservation, Openness-to-Change, and Hedonism. Recall that $\{v_{u,p}\}$ ’s have been normalized to remove individual’s leniency (or stringency) in ratings.

We formulate personal values prediction as a classification task similar to the previous work (Chen et al. 2014). We divide users into two equal-sized groups for each personal value p : *top $K\%$ users* and *bottom $K\%$ users* by $v_{u,p}$. The goal of the prediction task is to determine the group label of any new user as accurate as possible.

In the previous works (Chen et al. 2014; Sumner et al. 2012), $K = 50$ was used, i.e., a mid-split classification.

For each value dimension, the top 50% users with highest ground truth personal values are labeled as **positive**, and the rest as **negative**. To offer a buffer in between the positive and negative users in the prediction task, we also try $K = 40$. In this case, the top 40% and the bottom 40% users are labeled as positive and negative instances respectively, and the mid 20% users are not used.

Feature Selection

Post features using LIWC word categories. To solve the classification task, we need to derive relevant features from users’ social media data. Following the earlier work (Chen et al. 2014), we utilize all 90 word categories in the Linguistic Inquiry and Word Count (LIWC) (Pennebaker et al. 2015) as features. These word categories are used to investigate individuals’ beliefs, thinking patterns, social relationships, and personalities. For each LIWC word category, we obtain a feature score by the total frequencies of words from the word category found in the user’s own content postings (also known as **post features**).

Post features using S-LIWC word categories. For the Singapore’s user community, a English-based creole language known as *Singlish* is used widely to generate the social media content. Unlike standard English, Singlish incorporates words and lexical rules from Chinese, Chinese dialects, Malay, and even Indian languages. We therefore extend LIWC to incorporate Singlish words so as to leverage on Singlish word features. For example, the Singlish sentence “the question is very chim” carries the same meaning as “the question is difficult”. The word “chim” originates from a Chinese dialect. In other words, one can find both English and non-English words co-exist in Singlish. One can therefore exploit the similar context of similar words in the Singlish corpus to create a Singlish variant of LIWC known as **S-LIWC** (LO and Lim 2018).

In S-LIWC, the key idea is to use a Word2vec word embedding model (Mikolov et al. 2013) trained on a corpus comprises of around 150,000 Singapore tweets. With the learned model, Singlish words sharing similar context with words found in LIWC word categories are determined. For example, if “chim” and “difficult” (which is a seed word in the LIWC negative emotion word category) are found to be close to each other in the embedding space. One could therefore include “chim” as the Singlish word in the corresponding word category.

The top q closest words (q was set to 10 empirically) for

	Posts	Profile
# tokens ⁵	107,957	6021
# LIWC tokens	37,174 (34.43%)	2773 (46.06%)
# LIWC/S-LIWC tokens	38,846 (35.98%)	3038 (50.46%)

Table 3: Coverage of LIWC and S-LIWC words in our Facebook Dataset

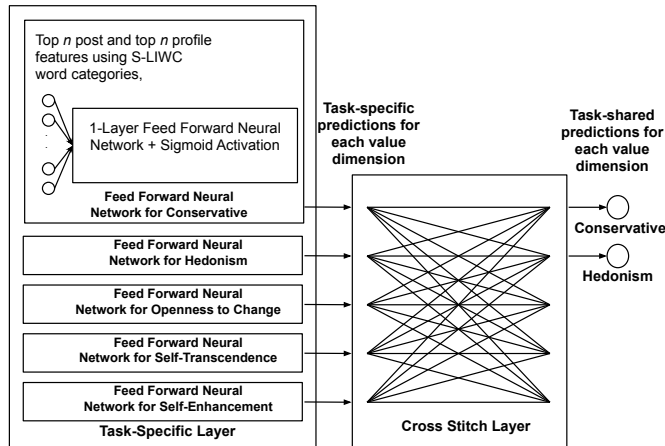


Figure 2: Proposed Stack Model

each LIWC seed word in the embedding space are then selected and added to the initial candidate word list of the seed word. As antonyms may share also similar context, they are removed using a logistic regression classifier trained to classify synonym-antonym relationship. This classifier is trained on the known synonyms and antonyms sets of LIWC seed words from Oxford Dictionary API⁴. After removing all non-synonyms from the candidate word list using the classifier, a total of 9,640 distinct words are added to the various LIWC categories which form the S-LIWC. More details about the construction and evaluation S-LIWC can be found in (XYZ).

Profile features. Other than Facebook content posts, we also explore other non-textual behavioral user data as features. We found that each Facebook user profile offers information about user’s interests, activities, and groups which come with textual content. Similar to content posts, we extracted words from the these profile text and derive LIWC (and S-LIWC) word category scores as profile features.

Word coverage. Table 3 shows the coverage of LIWC and S-LIWC words in our Facebook dataset. It shows that an additional 1672 and 265 unique S-LIWC words have been found in content posts and profile respectively. These include Singlish words such as “lah”, “la”, “xuan”, and “wan”, which are useful to analyze individuals’ personal values. This observation further signifies the importance of having a community specific LIWC dictionary.

Proposed Models

Our proposed prediction models consists of a few base models which serve as the baselines. We further propose a *stack*

model placing a cross stitch unit over a set of neural models one for each personal value. In the following, we describe both the base and stack models.

Base Models. With the selected features and ground truth user labels, we train base models for different personal values using Logistic Regression (LR). We leave out the popular Support Vector Machine (SVM) as our experiment results show its performance is not better than LR. We also leave out more advanced neural models as our experiments (not reported in this paper) found out that many of these models could not perform well due to the small dataset. For each personal value, we train 6 base models using the following feature settings: (a) post features using LIWC, (b) profile features using LIWC, (c) both post and profile features using LIWC, (d) post features using S-LIWC, (e) profile features using S-LIWC, and (f) both post and profile features using S-LIWC. In each setting, we only use top n post and top n profile features, selected based on a feature selection strategy mentioned in Section Evaluation of Proposed Models, as we empirically observe that using all the available features could lead to overfitting the model given our small dataset.

Stack Model. Unlike the previous efforts (Chen et al. 2014; Sumner et al. 2012) using separately prediction models for different personal value dimensions, we propose the Stack Model which exploits the significant correlation in between value dimensions as shown in Table 1. In this model, the prediction models for value dimensions are learnt together using a multi-task learning approach. As shown in Figure 2, the stack model has (a) a task specific layer which consists of a 1-layer feed forward neural network with sigmoid activation for each value dimension; and (b) a cross-stitch layer to combine output values from the task-specific layer and supervise how much sharing is needed among related tasks (Misra et al. 2016). We further elaborate this model below.

(a) **Task-specific layer.** Since our dataset is rather small, our task-specific layer consists of one feed forward neural network for each personal value dimension to avoid overfitting. Each feed forward neural network takes S-LIWC word categories as input features and returns prediction of a specific value dimension. Instead of feeding all S-LIWC features as input which may lead to overfitting even with strong regularization, we only use top n post features and/or top n profile features (using S-LIWC word categories) identified using a feature selection strategy (see Section Evaluation of Proposed Models) for each neural network. We apply sigmoid activation function to keep the predictions in the range of $[0,1]$. Another softmax layer is not required here to normalize the prediction outputs across dimensions as one user may be assigned multiple value dimensions. Formally, let $X_{u,p} \in \mathbb{R}^{2n \times 1}$ be the selected top n post and top n profile features for personal value p of user u . The task-specific prediction $\tilde{y}_{u,p}$ for personal value p of user u is predicted as:

$$\tilde{y}_{u,p} = \frac{\exp(A * X_{u,p} + b)}{\exp(A * X_{u,p} + b) + 1} \quad (1)$$

where $A \in \mathbb{R}^{1 \times 2n}$ and $b \in \mathbb{R}^{1 \times 1}$ are the trainable linear

⁴<https://developer.oxforddictionaries.com/>

projection weights and bias offset of the task-specific layer respectively.

(b) Cross-stitch layer. This layer takes task-specific prediction value for each value dimension and returns task-shared prediction value for each value dimension, which is calculated as the linear combination of task-specific predictions for different value dimensions. Formally, let $\tilde{Y}_u, \hat{Y}_u \in \mathbb{R}^{5 \times 1}$ denote the task-specific and task-shared value prediction for user u respectively. The cross-stitch unit comprises a trainable linear matrix $Z \in \mathbb{R}^{5 \times 5}$ to capture the sharing between different tasks as follows.

$$\hat{Y}_u = \frac{\exp(Z * \tilde{Y}_u)}{\exp(Z * \tilde{Y}_u) + 1} \quad (2)$$

To learn the trainable parameters of the proposed stack model, we minimize following objective function using SGD, considering the task-specific and task-shared predictions into account and generalizing the loss function which considers only final predictions (task-shared predictions).

$$\begin{aligned} L_{u,shared} &= Y_u \odot \hat{Y}_u + (1 - Y_u) \odot (1 - \hat{Y}_u) \\ L_{u,specific} &= Y_u \odot \tilde{Y}_u + (1 - Y_u) \odot (1 - \tilde{Y}_u) \\ L &= \sum_u L_{u,specific} + (1 - \beta) * L_{u,shared} \end{aligned} \quad (3)$$

where $Y_u \in \mathbb{R}^{5 \times 1}$ denotes the actual ground truth labels for top K prediction task of user u , and β controls the weight given to task-specific and task-shared loss functions. $Y_u[v] = 1$ if the user u possesses personal value v , and $Y_u[v] = 0$ otherwise. \odot represents the dot product operation. We empirically observe that giving more weight to $L_{u,specific}$ during the initial training epochs leads to better generalization of the model. Hence, β is set as $\exp(-m * \text{training epoch})$, where m (empirically set to 10^{-3}) is a hyperparameter to control the slope of the β value. Z matrix is initialized as an identity matrix and all other parameters are initialized using a normal distribution.

Empirically, we can observe that the weights learned in the final layer reflect the actual inter-correlations of the value dimensions, which is elaborated in Section Evaluation of Proposed Models. Suppose our base model of conservative dimension predicts a low score for a given user who has open to change ground truth label. This predicted score, upon reaching the task-sharing layer of our stack model, contributes to an increase the score for openness to change (due to the opposite correlation between the two personal value dimensions) even when the base model of openness to change does not predict a high score for the same user. Hence, the stack model may still return a high score for openness to change. Likewise, our stack model exploits the inter-correlations between personal values to modify or reinforce the prediction results.

Evaluation of Proposed Models

Experiment Setup. We evaluate our proposed prediction models against two state-of-the-art baselines using our Facebook dataset, the only dataset we can use in this research. The two baselines are:

- IBM Watson Personality Insight API⁶: A well known personal value prediction package which has been used in many commercial settings. We report the predicted Schwartz’s personal values returned by the API when it receives the post content from us.
- LR (all): This follows basically the Chen’s paper (Chen et al. 2014) and trains a logistic regression (LR) classifier (empirically observed that LR outperforms other classifiers such as naive Bayes, support vector machines, and decision tree) for each value dimension. All LIWC features are used as features in this model. The model however does not consider regional language differences and correlation between personal values.

We implemented our proposed base and stack models using Scikit-learn and tensorflow⁷ respectively. We measure the prediction accuracy by Area Under ROC Curve (AUC ROC) as it allows the results to be comparable to that in (Chen et al. 2014). For the base models for the different personal value dimensions, we further select top n LIWC word categories as features to represent each user. We compare the accuracy of the top $K\%$ prediction task for $n \in \{5, 10, 15, 20, 30, 40, 85\}$. To select the top n LIWC word category features, we considered different feature selection strategies like univariate correlation methods and, recursive feature elimination (RFE)⁸ and found RFE performs better in most of the cases. We empirically found out that $n = 15$ yields the best performance for all the value dimensions. Hence, RFE and $n = 15$ are used in all the subsequent experiments. For the stack model, we have used base models using S-LIWC word categories as these features show better results than base models using LIWC word categories.

Summary of Results. Note that our baseline methods can only yield results based on post features only. As shown in Table 4, our proposed models outperform the baselines across different value dimensions for both $K = 50$ and $K = 40$. Our base and stack model results are far better than the random baseline, which returns exactly 0.5 for AUC.

Surprisingly, IBM Watson Personality API does not even outperform the random guess for Hedonism (0.470) and Self-Enhancement (0.480) value dimensions. Another interesting observation is that Chen’s model (i.e., LR (all)) also perform poorly for this dataset, possibly due to its inability to generalize with limited data. This observation shows the effectiveness of our feature selection strategy.

S-LIWC vs LIWC Features. Feature wise, our base models using S-LIWC outperform those using LIWC in most of the value dimensions. The S-LIWC profile features perform particularly well for predicting Self-Transcendence, while the S-LIWC post features perform well for the rest. The concatenation of both post and profile feature sets further improves the prediction results considerably for most of the value dimensions.

⁶<https://www.ibm.com/watson/services/personality-insights/>

⁷<https://www.tensorflow.org/>

⁸RFE recursively prunes away the least important features obtained using regression coefficients until the desired number of features is reached.

		LR (all)	IBM Watson	Base - LIWC			Base - S-LIWC			Stack LIWC	Stack S-LIWC
		Post	Post	Post	Profile	Post Profile	Post	Profile	Post Profile		
$K = 50$	CO	0.487	0.554	0.711	0.632	0.711	0.754	0.64	0.795	0.742	0.775
	HE	0.444	0.47	0.668	0.65	0.684	0.698	0.696	0.633	0.718	0.721
	OC	0.624	0.525	0.719	0.629	0.726	0.747	0.608	0.758	0.782	0.809
	ST	0.610	0.589	0.72	0.755	0.845	0.714	0.775	0.849	0.858	0.869
	SE	0.481	0.480	0.705	0.639	0.702	0.754	0.744	0.783	0.726	0.777
$K = 40$	CO	0.491	0.573	0.712	0.636	0.692	0.708	0.568	0.704	0.749	0.807
	HE	0.449	0.569	0.62	0.662	0.652	0.688	0.668	0.664	0.682	0.707
	OC	0.647	0.541	0.744	0.632	0.756	0.76	0.668	0.756	0.839	0.873
	ST	0.627	0.608	0.732	0.748	0.78	0.708	0.726	0.82	0.817	0.823
	SE	0.483	0.454	0.736	0.644	0.756	0.768	0.834	0.804	0.802	0.829

Table 4: AUC ROC for top $K\%$ Prediction using 5-fold cross validation (The best results are shown in boldface.)

Our stack model using a two-layer neural architecture (involving base models using S-LIWC based features) gives the overall best performance. This result is encouraging as it shows that both S-LIWC and personal values correlation contribute to the accuracy of personal values prediction.

Interestingly, profile features alone could often yield prediction accuracy comparable to post features when using S-LIWC (e.g., Base model using S-LIWC for predicting SE). This is not observed when using LIWC. This is due to most of user profiles involving community-specific features.

Stack vs Base Models. As shown in Table 4, our proposed stack model outperforms even the best-performing base models for most of the personal values. The improvements are especially significant in the Openness to Change (6.7% better than Base-S-LIWC(Post+Profile)) and Hedonism (3.3% than Base-S-LIWC(Post only)) value dimensions. To further analyze the results of the stack model, we report the feature weights derived from the final layer of our stack model in Table 5. It shows the inter-correlations between value dimensions learned by the stack model consistent with what we know from Schwartz’s theory (Schwartz 1992). The circular structure also implies that opposing values in the structure should have significant negative correlation. For example, Table 5 shows significant negative weight assigned to the base model predicted conservative value $\hat{y}_{u, 'conserv.'}$ which allows predicted conservative value in the first layer to contribute negatively to the final prediction of openness to change value. Only 73.9% ($= \frac{4.28}{4.28+1.42+0.09}$) of the predicted score of base model for openness to change contributes to the final prediction. 24.5% ($= \frac{1.42}{5.79}$) of the predicted openness to change score is determined by the predicted conservative value by the base model. Note that conservative value is opposite to openness to change in the circular structure of personal values.

Top Feature Analysis. Table 6 lists the top 15 features of the base models using LIWC and S-LIWC for each value dimension. A positive (or negative) correlation between a word category and a value dimensions means that users high in the value dimension use words from the word category frequently (or rarely). We thus attempt to interpret some additional relationships captured by word categories with respect to the underlying goals of the value dimensions.

For Self-transcendence, the top positively correlated S-

	Feature Weight				
	CO	ST	OC	HE	SE
Conservative(CO)	4.98	-0.03	-0.57	0	-0.62
Self-Transcend.(ST)	-0.18	7.84	0	0	-0.57
Open. to Change(OC)	-1.42	0	4.28	0	-0.09
Hedonism(HE)	-0.71	-1.74	-0.24	4.41	0
Self-Enhance.(SE)	-0.32	-1.36	-0.48	0	5.58

Table 5: Feature weights derived from the stack models’ cross stitch unit for the top 50% prediction task

LIWC word category features such as “feel”, “sadness”, and “1st person plural” are highly reasonable. Users high in self-transcendence adopt a people-oriented sensitive persona, which is inlined with the defining goals of benevolence and universalism values. The top negatively correlated S-LIWC features are word categories such as “achievement” and “anger”, which are top positively correlated features for Self-Enhancement. This result further demonstrates the correlation between personal values, i.e., a negative correlation between Self-transcendence and Self-Enhancement. In contrast, top LIWC word category features includes a few function word categories such as adverbs and punctuation marks.

For Conservative, we observe that top 15 features extracted from posts using S-LIWC and LIWC are similar. Only the profile features shows some differences between the top features from S-LIWC and LIWC. This shows that profile features contribute to identifying different kinds of word usage patterns of individuals, which are not always found in posts. According to S-LIWC, Singaporeans who are high in conservative are likely to use words from the categories such as “health”, “home”, “religion”, and “family”. Over here, the conservative’s positive association with self-transcendence but negative association with self-enhancement may be the reason.

On the whole, our stack model shows the best results almost in all the cases and our models achieve significant improvements, 39.9% in Conservative, 44.2% in Hedonism, 54.1% in Openness to Change, 47.5% in Self-Transcendence, and 55.4% in Self-Enhancement, compared to the best of IBM personality and random baselines (when $K=50\%$ for the classification task). Our model clearly benefits from using user community specific features. There could be differences in the personal value profile distribu-

CO = Conservative		HE = Hedonism		OC = Openness to Change		ST = Self-Transcendence		SE = Self-Enhancement	
L1WC	S-L1WC	L1WC	S-L1WC	L1WC	S-L1WC	L1WC	S-L1WC	L1WC	S-L1WC
1st pers plural	1st pers plural	1st pers singular	Adjectives	1st pers singular	1st pers singular	1st pers plural	1st pers plural	Compare	Interrogatives
Anger	Anger	Adjectives	Compare	Negation	Negation	2nd person	2nd person	Interrogatives	Female
Sadness	Sadness	Interrogatives	Anxiety	Adjectives	Adjectives	3rd pers plural	3rd pers plural	Quantifiers	Discrepancies
Female	Female	Negative emotion	Friends	Interrogatives	Interrogatives	Auxiliary verbs	Auxiliary verbs	Female	Biological Processes
Male	Male	Friends	Female	Anxiety	Anxiety	Conjunctions	Conjunctions	Biological Processes	Body
Body	Body	Female	Male	Anger	Anger	Regular verbs	Regular verbs	Health	Health
Health	Health	Discrepancies	Discrepancies	Sadness	Sadness	Interrogatives	Interrogatives	Ingesting	Ingesting
Sexuality	Sexuality	Tentativeness	Tentativeness	Insight	Insight	Friends	Friends	Reward focus	Risk
Achievement	Achievement	Health	Health	Discrepancies	Discrepancies	Female	Female	Risk	Future focus
Reward focus	Reward focus	See	Sexuality	Power	Power	Cause	Cause	Future focus	Informal speech
Risk	Risk	Health	Risk	Reward focus	Reward focus	Discrepancies	Discrepancies	Future focus	Swear words
Past focus	Past focus	Sexuality	Risk	Risk	Risk	See	See	Netspeak	Netspeak
Home	Home	Risk	Home	Motion	Motion	Work	Work	Colons	Colons
Death	Death	Past focus	Money	Swear words	Swear words	Colons	Colons	Dash	Dash
Swear words	Swear words	Money	Death	Parenteses	Parenteses	Quotation marks	Quotation marks	Quotation marks	Quotation marks
		Question marks	Quotation marks	Parenteses	Parenteses	Quotation marks	Quotation marks	Quotation marks	Quotation marks
		Swear words	Quotation marks	Parenteses	Parenteses	Quotation marks	Quotation marks	Quotation marks	Quotation marks

POST FEATURES									
Conjunctions	1st pers plural	1st pers singular	1st pers plural	3rd pers singular	3rd pers plural	3rd pers singular	3rd pers plural	1st pers plural	Auxiliary verbs
Interrogatives	2nd person	1st pers plural	Adjectives	Impersonal pronouns	Impersonal pronouns	Impersonal pronouns	Impersonal pronouns	Compare	Interrogatives
Negative emotion	Auxiliary verbs	2nd person	Negative emotion	Conjunctions	Conjunctions	Conjunctions	Auxiliary verbs	Interrogatives	Quantifiers
Anxiety	Conjunctions	Impersonal pronouns	Female	Female	Negation	Negation	Negation	Anxiety	Anxiety
Female	Anxiety	Common adverbs	Discrepancies	Discrepancies	Sadness	Positive emotion	Sadness	Cause	Sadness
Discrepancies	Family	Negation	Tentativeness	Tentativeness	Female	Anxiety	Female	Discrepancies	Family
Tentativeness	Female	Positive emotion	Certain	Certain	Differentiation	Anger	Differentiation	Differentiation	Cause
Ingesting	Insight	Sadness	percept	Biological Processes	Feel	Biological Processes	Feel	Feel	Discrepancies
Power	See	Cause	Feel	Body	Health	Body	Health	Drives	Certain
Reward focus	Feel	Certain	Reward focus	Health	focuspresent	focuspresent	Affiliation	Body	Body
Death	Sexuality	Feel	Future focus	Home	Informal speech	Informal speech	Power	Motion	Motion
Informal speech	Home	Sexuality	Home	Religion	Assent	Assent	Nonfluencies	Informal speech	Informal speech
Swear words	Religion	Risk	Religion	Assent	Semicolons	Nonfluencies	Colons	Swear words	Swear words
Netspeak	Nonfluencies	Swear words	Swear words	Nonfluencies	Quotation marks	Semicolons	Semicolons	Netspeak	Netspeak
Nonfluencies	filler	Semicolons	Semicolons	Nonfluencies	Parenteses	Semicolons	Question marks	Question marks	Nonfluencies

PROFILE FEATURES									
Conjunctions	1st pers plural	1st pers singular	1st pers plural	3rd pers singular	3rd pers plural	3rd pers singular	3rd pers plural	1st pers plural	Auxiliary verbs
Interrogatives	2nd person	1st pers plural	Adjectives	Impersonal pronouns	Impersonal pronouns	Impersonal pronouns	Impersonal pronouns	Compare	Interrogatives
Negative emotion	Auxiliary verbs	2nd person	Negative emotion	Conjunctions	Conjunctions	Conjunctions	Auxiliary verbs	Interrogatives	Quantifiers
Anxiety	Conjunctions	Impersonal pronouns	Female	Female	Negation	Negation	Negation	Anxiety	Anxiety
Female	Anxiety	Common adverbs	Discrepancies	Discrepancies	Sadness	Positive emotion	Sadness	Cause	Sadness
Discrepancies	Family	Negation	Tentativeness	Tentativeness	Female	Anxiety	Female	Discrepancies	Family
Tentativeness	Female	Positive emotion	Certain	Certain	Differentiation	Anger	Differentiation	Differentiation	Cause
Ingesting	Insight	Sadness	percept	Biological Processes	Feel	Biological Processes	Feel	Feel	Discrepancies
Power	See	Cause	Feel	Body	Health	Body	Health	Drives	Certain
Reward focus	Feel	Certain	Reward focus	Health	focuspresent	focuspresent	Affiliation	Body	Body
Death	Sexuality	Feel	Future focus	Home	Informal speech	Informal speech	Power	Motion	Motion
Informal speech	Home	Sexuality	Home	Religion	Assent	Assent	Nonfluencies	Informal speech	Informal speech
Swear words	Religion	Risk	Religion	Assent	Semicolons	Nonfluencies	Colons	Swear words	Swear words
Netspeak	Nonfluencies	Swear words	Swear words	Nonfluencies	Quotation marks	Semicolons	Semicolons	Netspeak	Netspeak
Nonfluencies	filler	Semicolons	Semicolons	Nonfluencies	Parenteses	Semicolons	Question marks	Question marks	Nonfluencies

Table 6: Top 15 Post and Profile Features based on L1WC and S-L1WC (The positively correlated features are boldfaced.)

	ST	OC	HE	SE
Conservative (CO)	0.43	-0.44	-0.29	-0.29
Self-Transcendence (ST)		-0.34	-0.46	-0.71
Openness to Change (OC)			0.08	0.08
Hedonism (HE)				0.23

Table 7: Correlations between predicted personal value dimensions for the Twitter dataset (Significant correlations are boldfaced.)

tion for different user communities. Without considering the distribution differences and word use patterns, the prediction accuracy of personal values can suffer significantly.

Users' Behavior in Twitter vs Personal Values

In the next study, we apply our personal values prediction model to the analysis of a much larger Singapore social media user population finding the connections between their social media behavior and personal value profiles. Traditionally, such kind of studies could only be carried out by user surveys which were often limited to small number of users due to cost and did not involve real user behavioral data.

We use the Twitter dataset (see Section Datasets and Data Analysis), consisting of 85,308 users. This is the largest dataset we know that has been used in such a personal values related behavior study. We seek to find out if there are significant relationships between individuals' behavior in Twitter and their personal values determined by our stack model trained for the mid-split prediction task (i.e., $K = 50\%$) on the complete Facebook dataset. The stack model uses only post features based on S-LIWC word categories as profile features of Twitter are not the same as those of Facebook. All the tweets of the users are considered to extract post features. To avoid the subsequent behavioral study to be affected by personal values prediction errors, we only consider top and lowest x users ranked by their predicted personal values for each value dimension in the following analysis. x was empirically set to 5000 to include the 20% most confident prediction results.

To check whether the predicted labels are reasonable, Table 7 shows the correlations among the predicted personal value dimensions of the Twitter users. We clearly observe the correlation of Schwartz' personal values, where consecutive value dimensions are positively correlated (i.e., Conservative vs Self-Transcendence, and Hedonism vs Self-Enhancement) and significant negative correlations among opposite value dimensions (i.e., Self-Enhancement vs Self-Transcendence, and Conservative vs Openness to Change). This observation shows that the stack model predicts values with reasonably good consistency, albeit a lack of ground truth labels for accuracy evaluation.

We consider three types of behavior Twitter users demonstrate their activeness. They are characterized by: (a) number of original tweets generated during d period of time; (b) % of retweets ($\frac{\# \text{ of retweets}}{\# \text{ of tweets}}$) during d period of time; and (c) friend-to-follower ratio ($\frac{\# \text{ of friends}}{\# \text{ of followers}}$). We only report the results of d chosen to be the first month of 2017 as similar results were observed for other d settings. This study will seek to confirm a few hypotheses proposed by previous

works about the individuals' behaviors in Twitter and their personal values.

Hypothesis 1: High openness individuals are heavy users of Twitter. They tweet more often than other individuals (Sumner et al. 2012). Our results in Figure 3a clearly supports the hypothesis. Users high in openness to change generate more tweets on average than the users higher in other value dimensions. Figure 3a also shows that users low in openness to change are less active, with a small average number of original tweets. Moreover, the individuals high in Hedonism have the least average number of original tweets, which also indirectly supports a claim made in (Marshall et al. 2018) stating that extroverts (usually higher in hedonism) prefer to use other social media sites like Facebook for social purposes while Twitter is often used for informational purposes.

Hypothesis 2: Control and dominance over others as well as expression of personal interests are common among individuals who are high in Self-Enhancement. (Schwartz 2012). As shown in Figure 3b, Twitter users high in self-enhancement show very small % of retweets, suggesting that they do not like to share other users' opinions. In contrast, users with very low self-enhancement are very active in retweeting. This observation clearly supports Hypothesis 2 which states that individuals high in self-enhancement want to control and dominate others instead of following others' opinions.

Hypothesis 3: Protection of order and harmony in their relationships, and selective in making relationships are common among conservative people (Schwartz 1992). Figure 3c shows that there is a significant asymmetry in their friend-to-follower ratio. On average, only 33% of followers are getting followed for Twitter users with high conservative values. In contrast, users with low conservative values enjoy a higher friend-to-follower ratio (around 0.48). This observation indicates that conservative users prefer to select their social network carefully. Moreover, Figure 3c shows that high openness users like to make more mutual friends in Twitter compared to the users high in other value dimensions. This further supports to the fact that their tendency to follow new information and being active in Twitter, which is stated in Hypothesis 1.

Summary of Findings. Despite the differences between Twitter and Facebook, this study shows that the prediction models trained using the latter can be used to derive interesting findings of behavior demonstrated by Twitter users with different personal values. Note that this study has carefully selected users from the same community (i.e., social media users in Singapore), similar findings may not be replicated when the prediction models are trained using data from a completely unrelated user population. One possible approach to address this mismatch of training and test data is to adopt transfer learning to adapt the prediction models, which is another topic of research that should be studied in the future (Calais Guerra et al. 2011).

Discussion

Ethical Concerns. To protect the privacy of the participants when collecting and handling the data in this task, we fol-

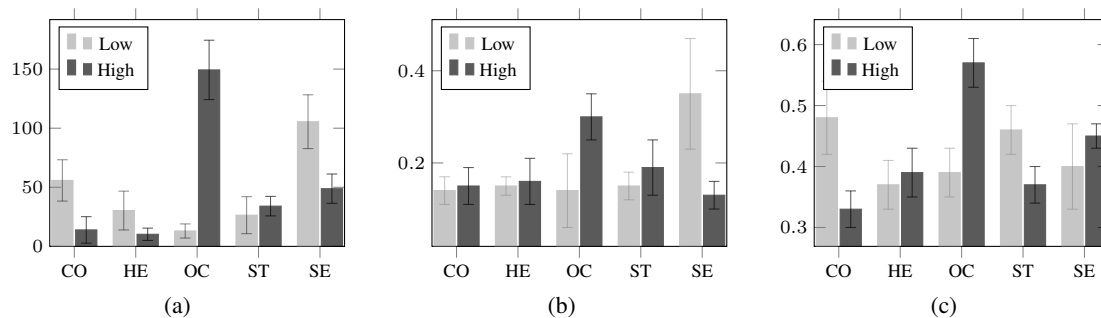


Figure 3: (a) Average number of tweets by top (high) and bottom (low) ranked x ($= 5000$) Twitter users in each value dimension; (b) Average % of retweets by top (high) and bottom (low) ranked x ($= 5000$) Twitter users in each value dimension; and (c) Average $\frac{\# \text{ of friends}}{\# \text{ of followees}}$ of top (high) and bottom (low) ranked x ($= 5000$) Twitter users in each value dimension ((ST=Self-Transcendence, SE=Self-Enhancement, CO=Conservative, OC=Openness to Change, HE=Hedonism), Standard deviations are marked as error bars)

lowed a research protocol approved by the Institutional Review Board (IRB) of the authors’ university. The datasets were also anonymized before using them to train our model.

To avoid the privacy concerns related to the applications, our model is designed such that the personal values of a given user is predicted merely based on the user’s text content (i.e., without using any shared features). Our model therefore could be deployed at the users’ end, instead of in a central system. The user’s postings can be used to predict the personal values without having to be shipped to a central system. Such personal value descriptors stored at the user end could already enable many useful services. For example, they could be used to personalize recommendations (e.g., suitable jobs) to users based on the users’ predicted personal values (Silva, Lo, and Lim 2020; Kern et al. 2019).

Generalizability. In this work, the language feature generation using community-specific LIWC (i.e., S-LIWC) is the only part specific to Singapore users. However, we observe that the proposed model outperforms the baselines with even conventional LIWC too. Thus, the proposed model is generalizable for other datasets. Also, the proposed model could be integrated with any community-specific LIWC to generate community-specific predictions.

Conclusion

In this paper, we first study how personal values prediction using a user’s social media content can be significantly improved by considering geographic differences in word usage and profile information.

In addition, we proposed a new stack model to predict individuals’ personal values by exploiting the correlations between personal values. Through our experiments, we show a significant boost in prediction accuracy for our proposed stack model compared to the state-of-the-art models proposed in previous works (e.g., IBM Personality Insight API). We finally showed that our model predicts personal values of a large set of Twitter users and derived interesting findings linking their personal values to their behavior on Twitter. These findings are largely consistent with previous research using traditional survey based studies. With reasonably ac-

curate personal values prediction models, we envisage that many interesting research studies on the impact of personal values to opinion polarization, community formation, and others can be carried out at scale. Although we have considered the individual’s word usage in user profiles, i.e., groups, likes, and interests, there are other behavioral features that can be used to enhance the prediction accuracy of personal values which should be studied in future work. In addition, incorporating network structure and dynamic nature in social media to predict personal values may also be another promising future direction.

Acknowledgements

This research is supported by the National Research Foundation, Singapore under its International Research Centres in Singapore Funding Initiative. Any opinions, findings and conclusions or recommendations expressed in this material are those of the authors and do not reflect the views of National Research Foundation, Singapore.

References

- Boyd, R. L.; Wilson, S. R.; Pennebaker, J. W.; Kosinski, M.; Stillwell, D. J.; and Mihalcea, R. 2015. Values in words: Using language to evaluate and understand personal values. In *ICWSM*.
- Braithwaite, V. A., and Law, H. 1985. Structure of human values: Testing the adequacy of the rokeach value survey. *Journal of personality and social psychology*.
- Calais Guerra, P. H.; Veloso, A.; Meira Jr, W.; and Almeida, V. 2011. From bias to opinion: a transfer-learning approach to real-time sentiment analysis. In *KDD*.
- Caprara, G. V.; Schwartz, S.; Capanna, C.; Vecchione, M.; and Barbaranelli, C. 2006. Personality and politics: Values, traits, and political choice. *Political psychology*.
- Chen, J.; Hsieh, G.; Mahmud, J. U.; and Nichols, J. 2014. Understanding individuals’ personal values from social media word use. In *CSCW*.
- Cronbach, L. J. 1951. Coefficient alpha and the internal structure of tests. *psychometrika*.

- Golbeck, J.; Robles, C.; and Turner, K. 2011. Predicting personality with social media. In *CHI*.
- Grankvist, G., and Kajonius, P. 2015. Personality traits and values: a replication with a Swedish sample. *International Journal of Personality Psychology*.
- Hofstede, G. 1984. *Culture's consequences: International differences in work-related values*. sage.
- Hsieh, G.; Chen, J.; Mahmud, J. U.; and Nichols, J. 2014. You read what you value: understanding personal values and reading interests. In *CHI*.
- Huberman, B. A.; Romero, D. M.; and Wu, F. 2009. social networks that matter: Twitter under the microscope. *First Monday*.
- Inglehart, R. 1997. *Modernization and postmodernization: Cultural, economic, and political change in 43 societies*. Princeton University Press.
- Jin, S.-A. A. 2013. Peeling back the multiple layers of Twitter's private disclosure onion: The roles of virtual identity discrepancy and personality traits in communication privacy management on Twitter. *New Media & Society*.
- Kern, M. L.; McCarthy, P. X.; Chakrabarty, D.; and Rizoiu, M.-A. 2019. Social media-predicted personality traits and values can help match people to their ideal jobs. *PNAS*.
- LO, P.-C., and Lim, E.-P. 2018. On learning psycholinguistics tools for English-based creole languages using social media data. In *Proceedings of IEEE International Conference on Big Data (IEEE BigData)*.
- Maheshwari, T.; Reganti, A. N.; Gupta, S.; Jamatia, A.; Kumar, U.; Gambäck, B.; and Das, A. 2017. A societal sentiment analysis: Predicting the values and ethics of individuals by analysing social media content. In *EACL*.
- Maio, G. R. 2010. Mental representations of social values. In *Advances in experimental social psychology*. Elsevier.
- Marshall, T. C.; Ferenczi, N.; Lefringhausen, K.; Hill, S.; and Deng, J. 2018. Intellectual, narcissistic, or Machiavelian? How Twitter users differ from Facebook-only users, why they use Twitter, and what they tweet about. *Psychology of Popular Media Culture*.
- Mikolov, T.; Sutskever, I.; Chen, K.; Corrado, G. S.; and Dean, J. 2013. Distributed representations of words and phrases and their compositionality. In *NIPS*.
- Misra, I.; Shrivastava, A.; Gupta, A.; and Hebert, M. 2016. Cross-stitch networks for multi-task learning. In *CVPR*.
- Mukta, M. S. H.; Ali, M. E.; and Mahmud, J. 2017. Identifying and predicting temporal change of basic human values from social network usage. In *ASONAM*.
- Mukta, M. S. H.; Khan, E. M.; Ali, M. E.; and Mahmud, J. 2017. Predicting movie genre preferences from personality and values of social media users. In *ICWSM*.
- Parks-Leduc, L.; Feldman, G.; and Bardi, A. 2015. Personality traits and personal values: A meta-analysis. *Personality and Social Psychology Review*.
- Pennebaker, J. W.; Boyd, R. L.; Jordan, K.; and Blackburn, K. 2015. The development and psychometric properties of liwc2015. Technical report.
- Rokeach, M. 1973. *The nature of human values*. Free press.
- Schwartz, S. H. 1992. Universals in the content and structure of values: Theoretical advances and empirical tests in 20 countries. In *Advances in experimental social psychology*. Elsevier.
- Schwartz, S. H. 2003. A proposal for measuring value orientations across nations. *Questionnaire Package of the European Social Survey*.
- Schwartz, S. H. 2012. An overview of the Schwartz theory of basic values. *Online readings in Psychology and Culture*.
- Silva, A.; Lo, P.-C.; and Lim, E.-P. 2020. JPLink: On Linking Jobs to Vocational Interest Types. In *PAKDD*.
- Sumner, C.; Byers, A.; Boochever, R.; and Park, G. J. 2012. Predicting dark triad personality traits from Twitter usage and a linguistic analysis of tweets. In *ICMLA*.
- Verplanken, B., and Holland, R. W. 2002. Motivated decision making: Effects of activation and self-centrality of values on choices and behavior. *Journal of personality and social psychology*.