

Singapore Management University

Institutional Knowledge at Singapore Management University

Research Collection Library

SMU Libraries

8-2023

Advancing and championing research: Research librarians at SMU libraries

Lip Hwee TEE

Singapore Management University, lhtee@smu.edu.sg

Benedict YEO

Singapore Management University, benedictyeo@smu.edu.sg

Redzuan ABDULLAH

Singapore Management University, redzuana@smu.edu.sg

Follow this and additional works at: https://ink.library.smu.edu.sg/library_research



Part of the [Information Literacy Commons](#)

Citation

TEE, Lip Hwee; YEO, Benedict; and ABDULLAH, Redzuan. Advancing and championing research: Research librarians at SMU libraries. (2023). *Universitas Indonesia The Crystal of Knowledge Festival 2023 International Webinar 2023 August 28*. 1-22.

Available at: https://ink.library.smu.edu.sg/library_research/210

This Presentation is brought to you for free and open access by the SMU Libraries at Institutional Knowledge at Singapore Management University. It has been accepted for inclusion in Research Collection Library by an authorized administrator of Institutional Knowledge at Singapore Management University. For more information, please email cherylds@smu.edu.sg.

Advancing and Championing Research: Research Librarians at SMU Libraries



Presenters

Tee Lip Hwe & Benedict Yeo

Research Librarians,
Singapore Management University Libraries

28 August 2023



Contents

- Research Librarian in the Research Ecosystem
- Research Librarian
 - Accountancy and Finance
 - Social Sciences
- Strategic Developments & Service Innovation

Research Librarian in the Research Ecosystem

Dedicated Research Librarian for every School

► SCHOOLS & COLLEGES



College Of Integrative Studies »

The College of Integrative Studies (CIS) serves as a centre and incubator for interdisciplinary and integrative teaching and research through its undergraduate and postgraduate programmes delivered by a world-class faculty and is the first School in Singapore to offer an Individualised Major to nurture graduates of the future.

School Of Accountancy »

At the forefront of industry developments in the accounting and business fields, the School of Accountancy (SoA) develops versatile professionals and leaders through its undergraduate, master's and doctoral programmes.

School Of Economics »

The School of Economics (SoE) is one of Asia's leading research schools, with an internationally-recognised faculty known for contributions to economic research. The School of Economics (SoE) offers undergraduate, master's and doctoral programmes.

Yong Pung How School Of Law »

The award-winning School of Law (SoL) fosters intellectual curiosity and creativity to nurture lawyers who lead and serve the community with distinction.

College Of Graduate Research Studies »

The College of Graduate Research Studies (CGRS) enhances integration and interdisciplinarity across the various SMU postgraduate research programmes through a holistic learning experience and well-grounded approach to research. This is achieved through interdisciplinary programmes, shared courses and professional training workshops.

Lee Kong Chian School Of Business »

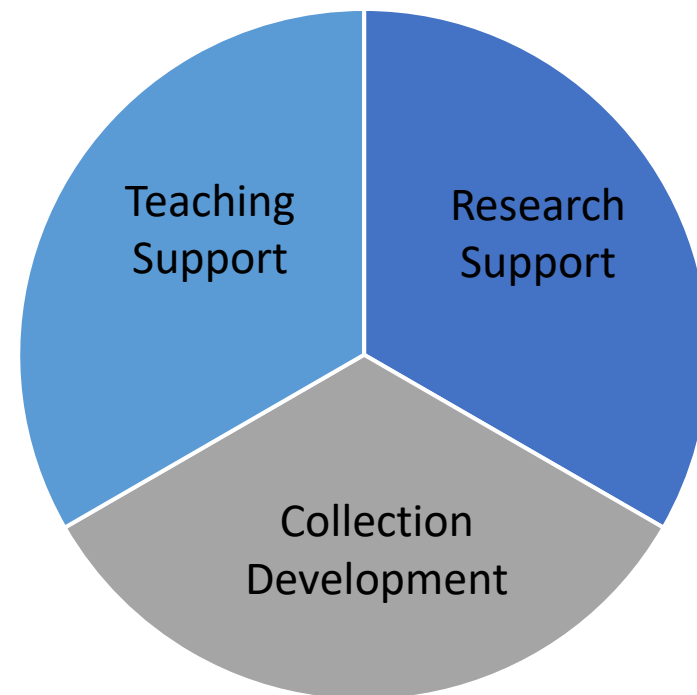
One of the top business schools worldwide, the Lee Kong Chian School of Business (LKCSB) is a triple-accredited business school (AACSB, AMBA and EQUIS) offering a transformative learning experience through its undergraduate, master's (MBA and EMBA) and doctoral programmes.

School Of Computing And Information Systems »

Internationally recognised for its innovative research and education on Information Systems Technology and Information Systems Management, the School of Computing and Information Systems (SCIS) is known for its leading edge but practical approach to IT solutions.

School Of Social Sciences »

The School of Social Sciences (SoSS) offers Singapore's first multi-disciplinary social sciences programme, with the opportunity to take on a second major with the other schools in the university.



Research Librarian

Accountancy and Finance

Roles of Research Librarian for Accounting and Finance

Subject Expertise	Specialise in Accounting and Finance discipline, understanding its unique research needs and resources.
Collection Development	Recommend relevant materials (books, journals, databases).
Research Support	Provide specialised research needs, e.g. assisting with database usage, or finding specific data or financial reports.
Instruction and Workshops	Deliver course-integrated instruction, and workshops on library resources, database usage, etc.
Faculty Liaison/ Collaboration	Understand faculty's research needs, recommend new resources, and potentially collaborate on research projects.
Advocacy and Outreach	Promote library resources and services.
Curation	Maintain research guides and bibliographies.
Stay Updated	Keep up with emerging research trends, tools and resources, e.g. participating in webinars, taking courses, etc.

Resources to Support Research – Financial Databases

- Bloomberg
- Capital IQ
- CRSP
- Compustat
- Datastream
- Eikon
- FactSet

- Important comprehensive databases subscribed by SMU Libraries for SMU Communities, supporting [learning and research](#)
- SMU Libraries the custodian of [essential financial databases](#)

Examples of Queries Handled – Accounting and Finance

Research consultation and support to

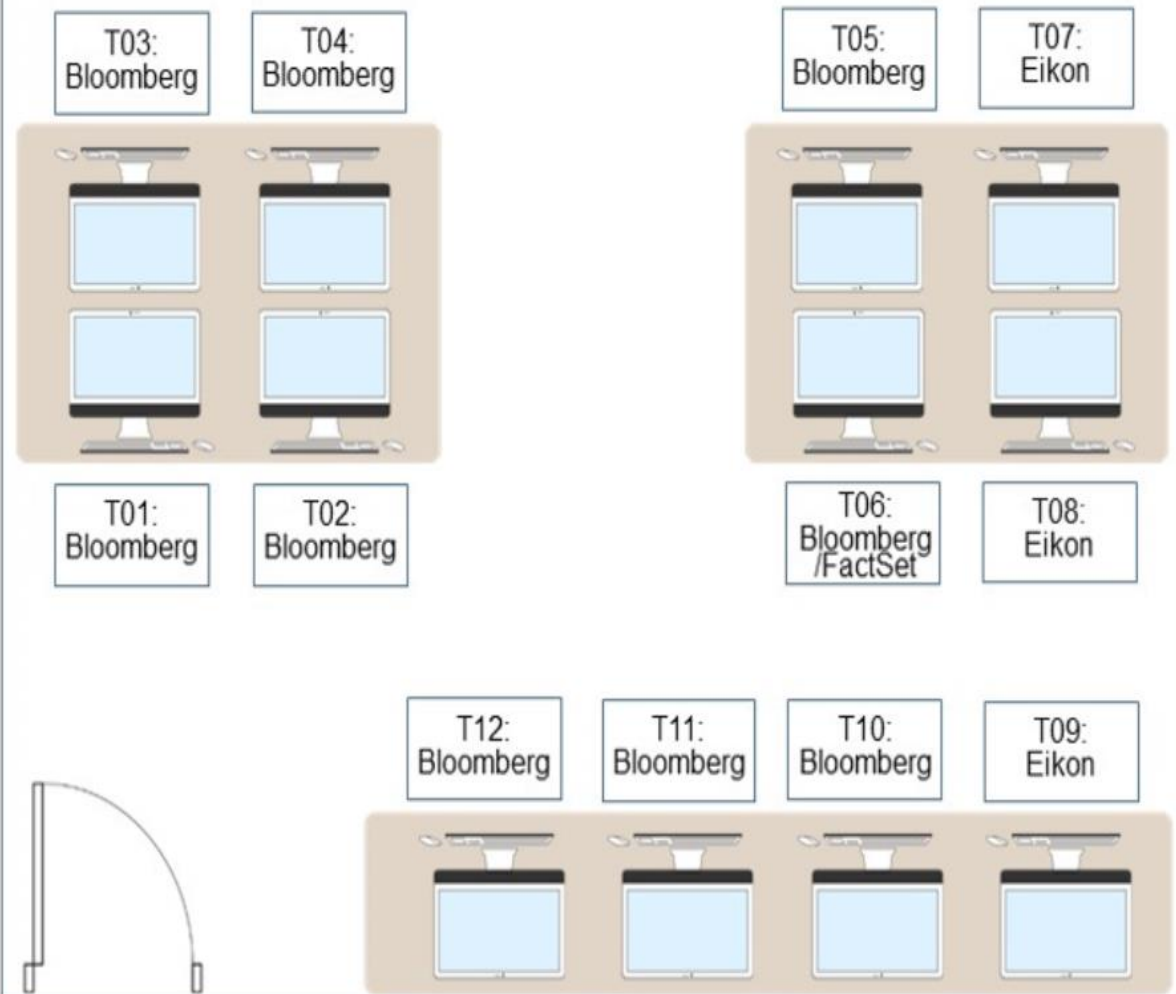
- Research Associate on [daily stock price of Singapore shares](#) from Bloomberg
- Research Associate on [corporate reports of Singapore Exchange-listed firms](#) from Bloomberg and Capital IQ
- Research Assistants with database training, supporting faculties' [industry research project](#) requiring Bloomberg, Capital IQ, and Datastream
- faculties on [ESG](#), providing strategic approach to large dataset retrieval of multiple ESG metrics time series from Bloomberg and Eikon
- Faculties, researchers, and students in other areas including [Alternative Investments](#), [Equity Index Future Options](#), [Green Revenue](#), [Institutional Ownership](#), etc.

Services to Support Research – Bite-Sized Libraries Workshop

- Learning Bloomberg the Fun Way
 - Data Extraction from WRDS with Python Programming
 - Python 101: The Basics
 - Python 101: Tinkering with Libraries and APIs
 - First Steps in Text Mining Basics in Accounting and Finance
 - Financial Data Analysis with R
- SMU Libraries Bite-Sized Libraries Workshops support SMU's [Graduate Learning Outcomes \(GLOs\)](#)
 - SMU Libraries' continuous effort to promote [digital and data literacy](#)

New Services – Embedded Librarianship Services @ IDS

Investment & Data Studio - Physical Database Terminals - Li Ka Shing Library



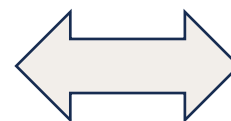
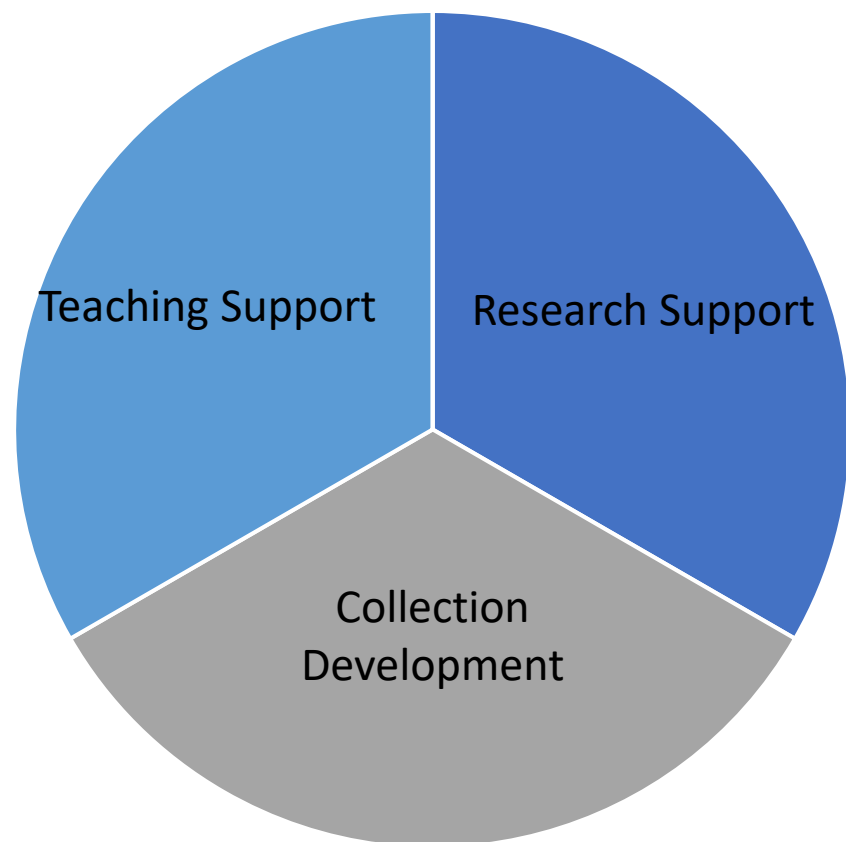
- Embedded Librarianship Services at [Investment & Data Studio \(IDS\)](#), Li Ka Shing Library
- SMU Libraries' initiative and commitment to providing [excellent and responsive support](#) and [optimal services](#), supporting learning and research
- [Positive experience](#) - one query attended to in the Studio set off another query
- Appointment for [research consultation](#) via LibCal or email

Research Librarian

Social Sciences

Research Librarian's Role

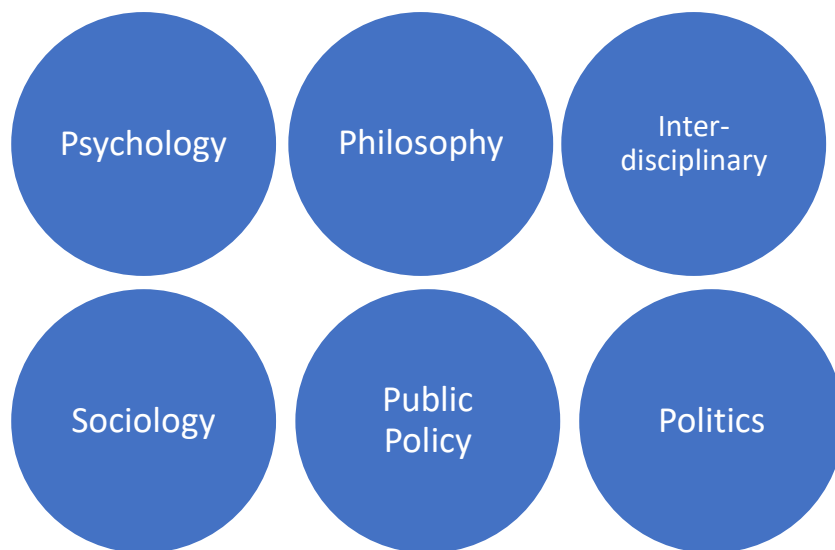
- Three areas of a research librarian's role



Subject Expertise
Collection Development
Research Support
Instruction and Workshops
Faculty Liaison/ Collaboration
Advocacy and Outreach
Curation
Stay Updated

Teaching Support – Research Workshops

Research Librarian for the School of Social Sciences supports **undergraduate research** through in-class information literacy and research **workshops**.

 Clarivate™ EBSCOhost overton DOW JONES
FACTIVA JSTOR

Examples

Identify a **news** article on active aging, and a literature review which identifies a **journal article** this topic.

- Google News, Factiva, Government website
- SocIndex with Full Text

Guide students to search for articles in the **top 50 sociology journals**, and for them to use the **Web of Science Platform**.

- Journal Citation Report
- Web of Science

Research Support / RLs Collaboration

Serves : **UG** | **PG** | **Faculty**

Research consultation and queries


- **Search strategy** for **journal articles** on topics such as relationship between well-being and working from home
- **Official coverage** and statements of government positions on **policy** matters
 - e.g. aging and wellness, international relations


Research Support / RLs Collaboration

Interdisciplinary Research

Research Librarians may also come together upon request when research work requires **multiple disciplines**.

In this instance, Professor Wang Heng's research taps into law, finance and social sciences.



 Heng Wang • 1st
Professor of Law, Yong Pung How School of Law, Singapore...
2w • 

The future of the international financial system: The emerging CBDC network and its impact on regulation
Visual abstract: <https://lnkd.in/gQTBG8V4>
7-min video: <https://lnkd.in/gMaC4atn>
<https://lnkd.in/grsKm4Dv>
Bryan Leow, Danping Dong, Mui Yen Tay, Tiziana Tan 陳英嬌, Keisha Srinivasan, Lip Hwe Tee, Benedict Yeo (Zed Yeo), Tony S.
Singapore Management University, SMU Yong Pung How School of Law, Wiley, UNSW CIBEL Centre

Strategic Developments & Service Innovation

Systematic Review Support Services

2023 | SMU Libraries started piloting systematic review support

“A systematic review is an **academic research** paper that uses a method called ‘evidence synthesis’, which can include meta-analysis, to look for answers to a pre-defined question. The purpose of a systematic review is to **sum up the best available research** on that specific question.”

Campbell
Collaboration

A systematic review attempts to **identify, appraise and synthesize** all the empirical evidence that meets pre-specified eligibility criteria to answer a specific research question.

Cochrane

- Targeted at Researchers
- Different levels of support from consultation to collaboration
- Provision and training on use of tools such as Covidence

Business | Entrepreneurship

Liaison works for assigned Institutions and Centres

- Institute of Innovation and Entrepreneurship (IIE)
- SMU ExD

Academic library positioning in entrepreneurial ecosystem

- Collaborate with IIE on entrepreneurship resources to include startups, VC|PE and to include research support for students in Entrepreneurship Business majors
- Co-ordinate with IIE to improve [over 400 SMU BIG Startups](#) presence and discovery in [Pitchbook](#) and [Crunchbase](#)
- Provide [research consults](#) to students taking part in competitions such as [LKY Global Business Plan Competition](#)



Redzuan Abdullah
Research Librarian,
Business &
Entrepreneurship

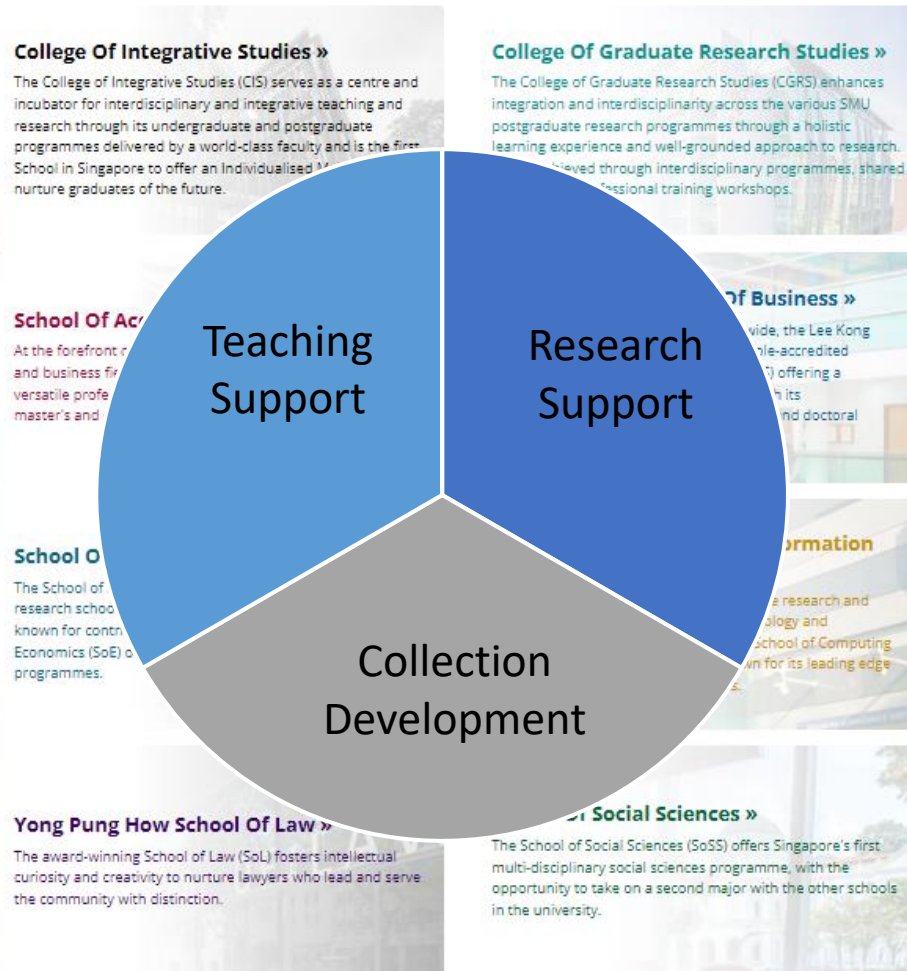
Strategic Developments | Service Innovation

Research Librarians lead or contribute as a key member to **strategic developments** and **service innovations**

- Systematic Review Services
- Investment and Data Studio
- Open Education Resources
- Sustainability
- Entrepreneurship

In Summary

► SCHOOLS & COLLEGES



Contact us

Speaker



[Tee Lip Hwe](#)

Research Librarian, Accountancy
& Business (Finance)

lhtee@smu.edu.sg

Speaker



[Benedict Yeo](#)

Research Librarian,
Social Sciences

benedictyeo@smu.edu.sg

Contributor



[Redzuan Abdullah](#)

Research Librarian,
Business & Entrepreneurship

redzuana@smu.edu.sg