

Singapore Management University

Institutional Knowledge at Singapore Management University

COAR Asia OA Meeting 2021

COAR Asia OA Meeting 2021

Oct 26th, 3:25 PM

Toward open science @LIPI/BRIN

Hendro SUBAGYO

National Agency for Research and Innovation, Indonesia

Madiareni SULAIMAN

National Agency for Research and Innovation, Indonesia

Follow this and additional works at: <https://ink.library.smu.edu.sg/asiaoa2021>



Part of the [Scholarly Communication Commons](#)

SUBAGYO, Hendro and SULAIMAN, Madiareni. Toward open science @LIPI/BRIN. (2021). COAR Asia OA Meeting 2021. .

Available at: <https://ink.library.smu.edu.sg/asiaoa2021/program/agenda/22>

This Presentation is brought to you for free and open access by the SMU Libraries at Institutional Knowledge at Singapore Management University. It has been accepted for inclusion in COAR Asia OA Meeting 2021 by an authorized administrator of Institutional Knowledge at Singapore Management University. For more information, please email cherylds@smu.edu.sg.

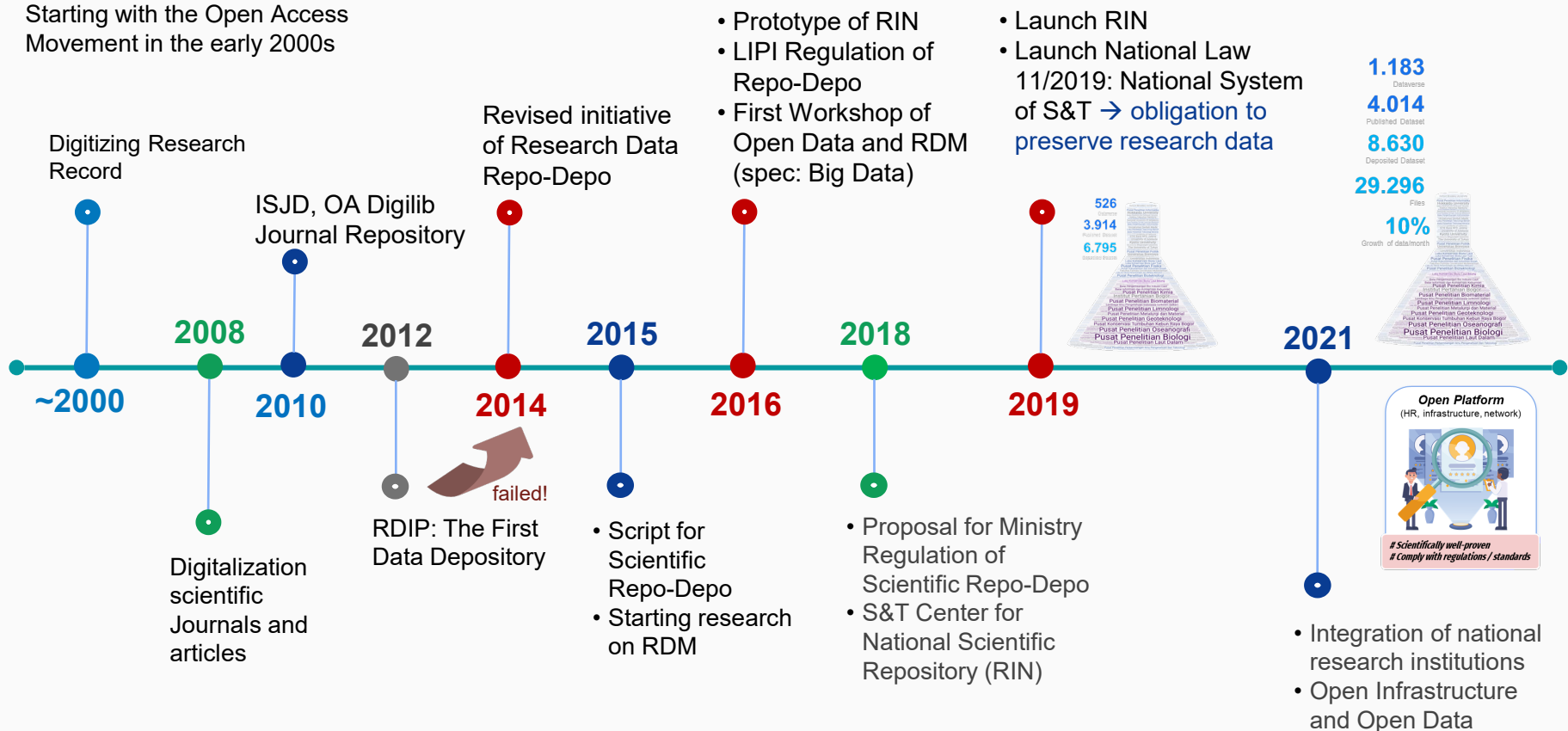
Toward Open Science @LIPI/BRIN: Scientific Data Services with RIN (the Indonesian Research Data Repository)

Hendro Subagyo & Madiareni Sulaiman

Center for Data and Information, National Agency for Research and Innovation (BRIN)
Center for Scientific Data and Documentation, Indonesian Institute of Sciences (LIPI)

Timeline of Open Data

Starting with the Open Access Movement in the early 2000s



Note: repo-Depo = repository-depository

BRIN: fuse of 5 national research agencies

Ristek + LIPI + LAPAN + BATAN + BPPT

On 5 May 2021, Joko Widodo signed Presidential Decree No. 33/2021, effectively establishing BRIN as sole national research agency → the biggest national agencies merger in decades.

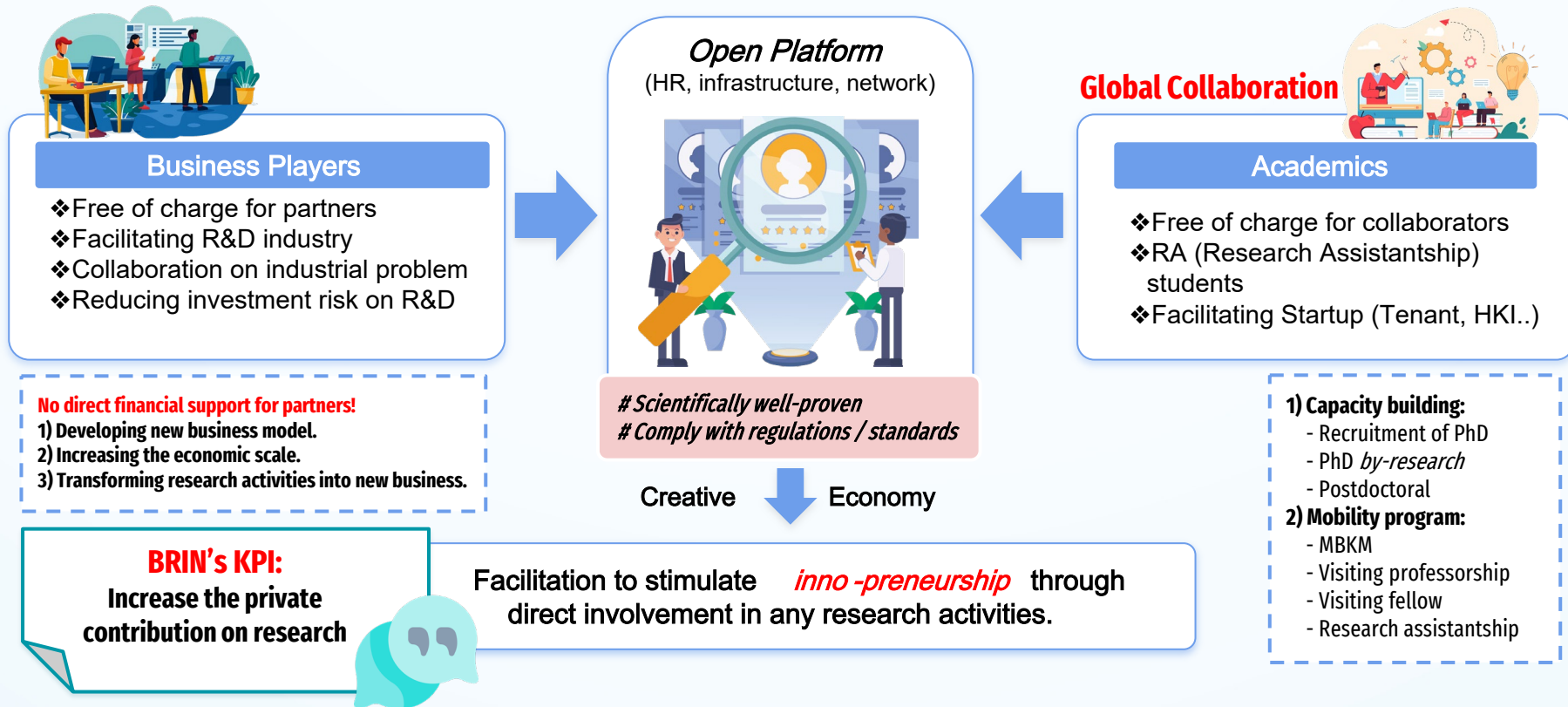
On 1 Sept 2021, 5 agencies merged to BRIN.

- Ministry of Research, Technology and Higher Education
- Indonesian Institute of Sciences (*Lembaga Ilmu Pengetahuan Indonesia*, LIPI)
- Agency for the Assessment and Application of Technology (Indonesian: *Badan Pengkajian dan Penerapan Teknologi*, BPPT)
- National Nuclear Energy Agency of Indonesia (*Badan Tenaga Nuklir Nasional*, BATAN)
- National Institute of Aeronautics and Space (*Lembaga Penerbangan dan Antariksa Nasional*, LAPAN) fused into BRIN



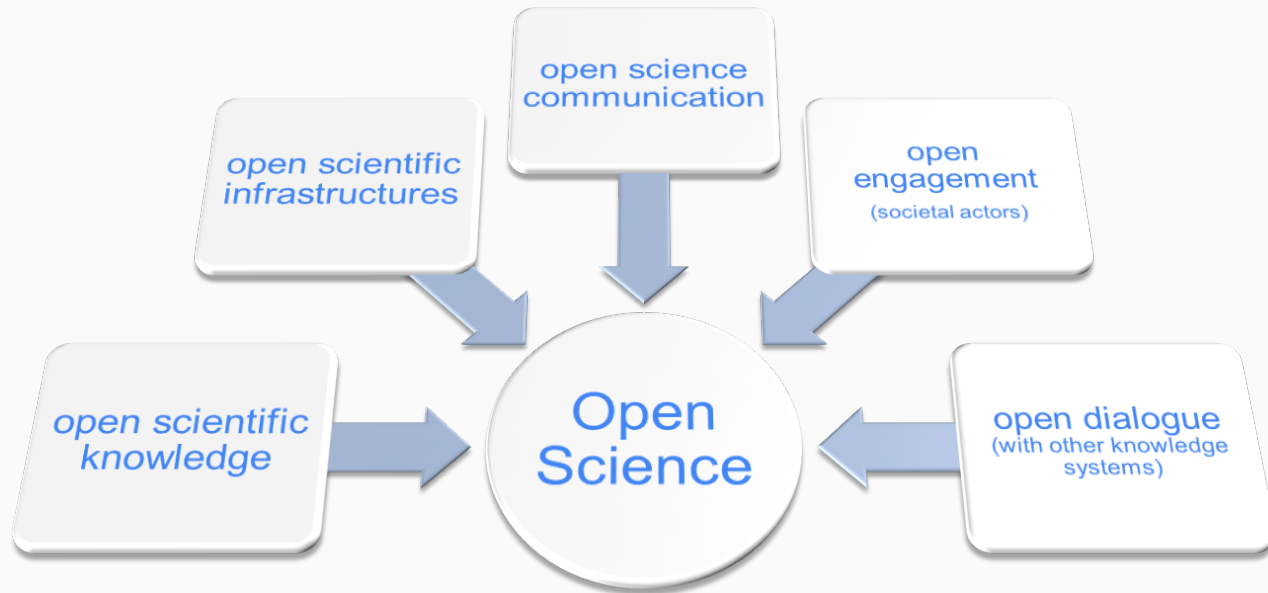
Improving Research and Innovation Ecosystem

BRIN is the ultimate solution for low *critical mass*, creating the *collaboration hub + enabler* for multi local and global stakeholders, in particular local industries to enter R&D based product developments.



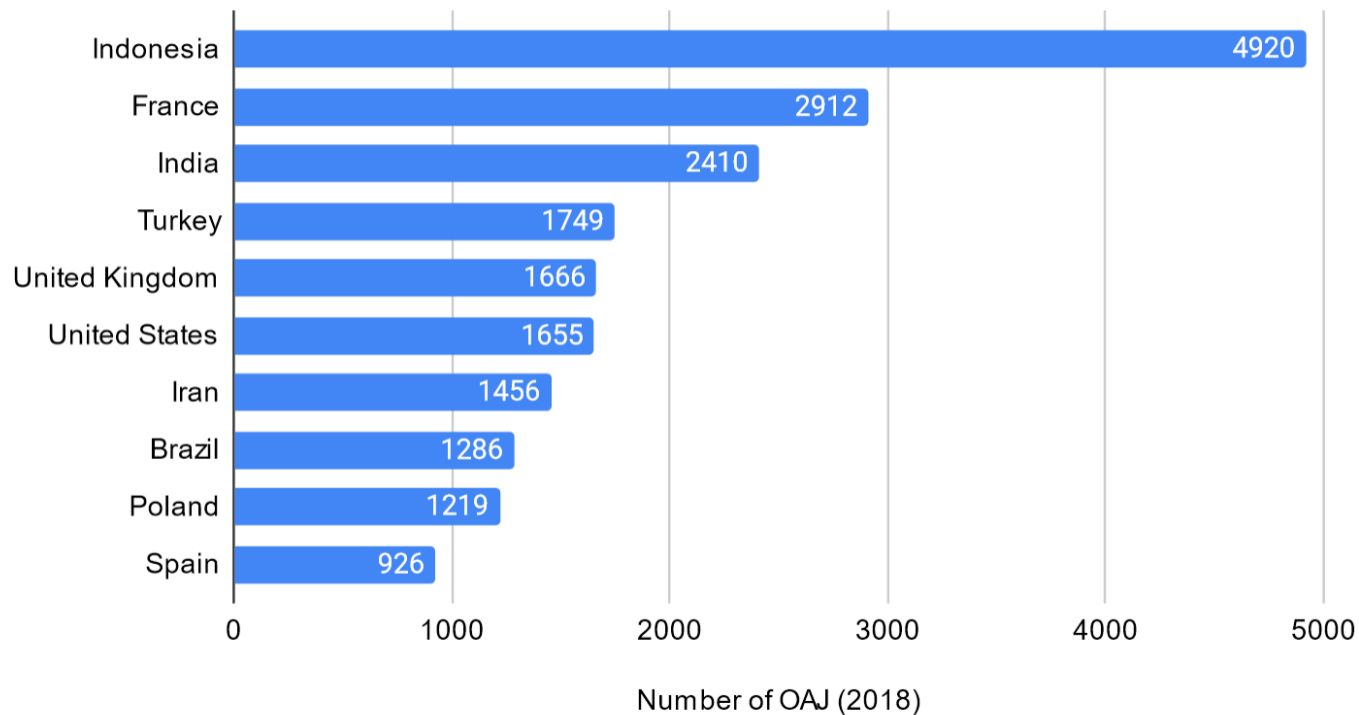
LIPI/BRIN and Open Science

- Making LIPI/BRIN as hub of research collaboration by opening the infrastructure (human resource, institutional networks and software-hardware) to public
- Developing requirement policy to support the final draft of UNESCO's Recommendation of Open Science (May 2021)



Top 10 Open Access Journals (ROAD 2018 Report <https://road.issn.org/>)

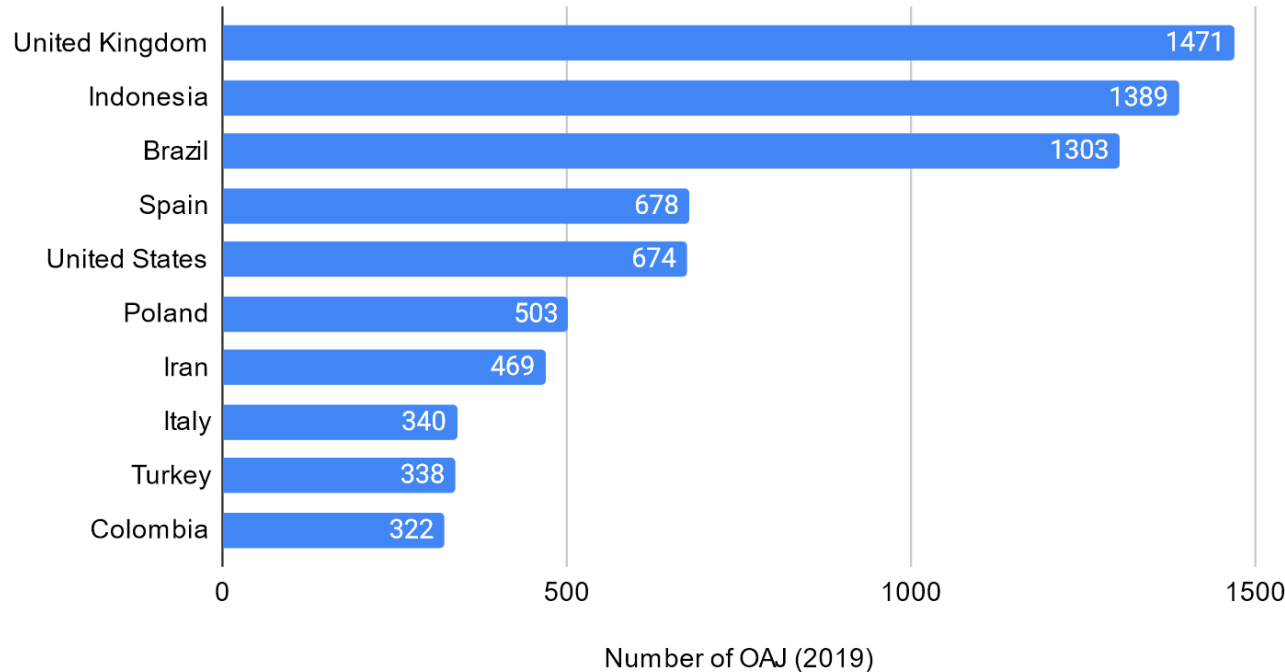
ROAD (2018)



Top 10 Open Access Journals (DOAJ 2019)

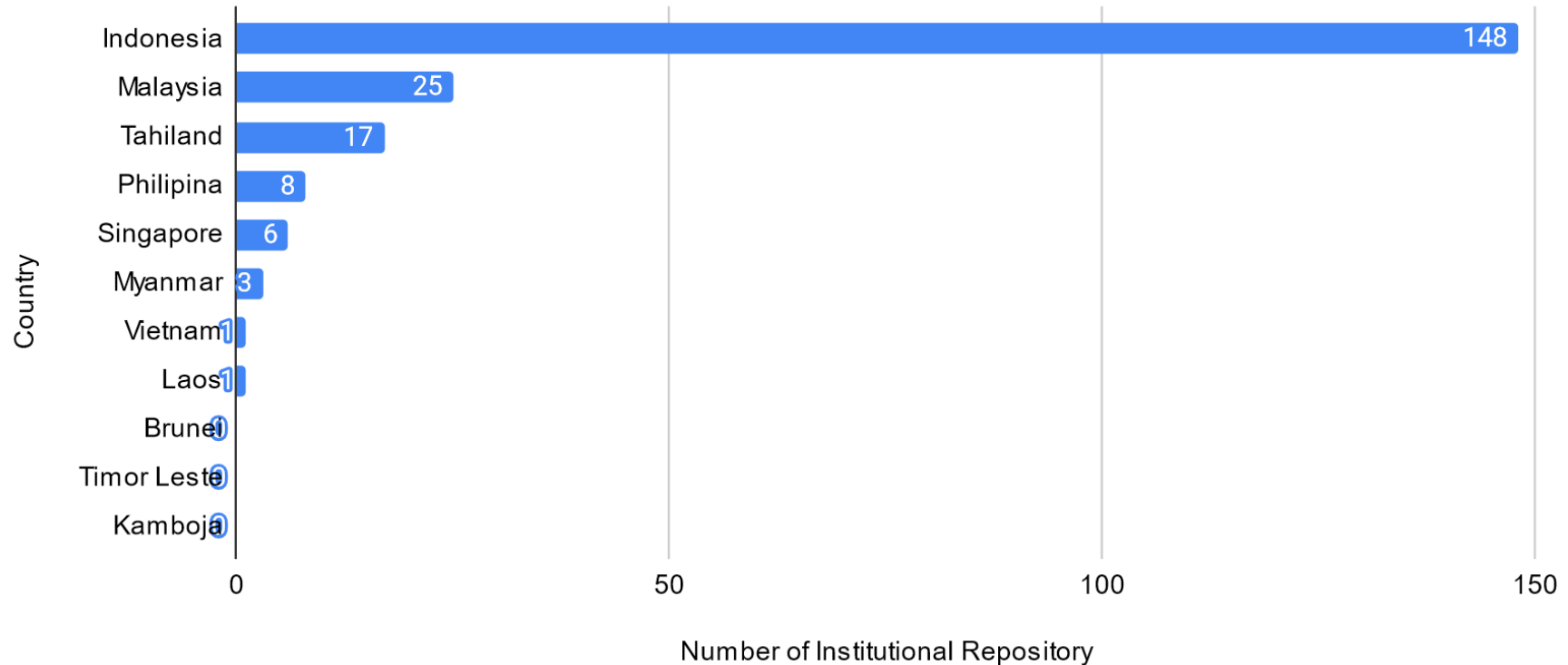


DOAJ (2019)



Morrison, H. et al. (2019). OA Main 2019: Dataset, documentation and open peer review invitation. *Sustaining the knowledge commons*. <https://sustainingknowledgecommons.org/2019/11/20/oa-main-2019-dataset-documentation-and-open-peer-review-invitation/>

Number of Institutional Repository of SE Asia (OpenDOAR 2020)



What we have done (1)

- Build the national repository for journals (2009 ~) and data (2018 ~)
 - ISDJ (2009~), Garuda (2010~), RIN (2018~)
- Encourage of publishing the research results by incentive and ranking
 - Using Simlimtabmas (2016~) and SINTA (2017~) as as a reference for giving research grant and other incentives
- Encourage development of institutional repository (2010 ~) through university/school accreditation. (Status: 148 institutional repositories, mostly are publication repositories and only 2 are data repositories)

What we have done (2)

- Established better standard journal management guideline (Arjuna 2018~)
- Encourage online and open access journal framework
- Provide and facilitate the implementation of the open journal, open data and Open Science movements
 - BRIN/LIPI opens facilities: HPC, RIN, Rujukan, RINArxiv, ELSA (laboratories)

BRIN's Open Facilities to support Open Science movements (open for public)



RIN: Repositori Ilmiah Nasional (National Scientific Repository)

National repository for research data

7.136 dataset, 18.559 files, from about 700 research dataverses/groups.

rin.lipi.go.id



ELSA (Science Services Electronic)

Laboratories and other research services.

534 labs (equipments), 51 machines etc.

elsa.lipi.go.id



Mahameru – LIPI HPC

Supercomputing for Research

hpc.lipi.go.id



Rujukan (Home of Science Journals)

Free hosting for OJS: 347 journals.

rujukan.lipi.go.id



RIN Arxiv

community-led digital archive for unpublished preprints.

rinarxiv.lipi.go.id

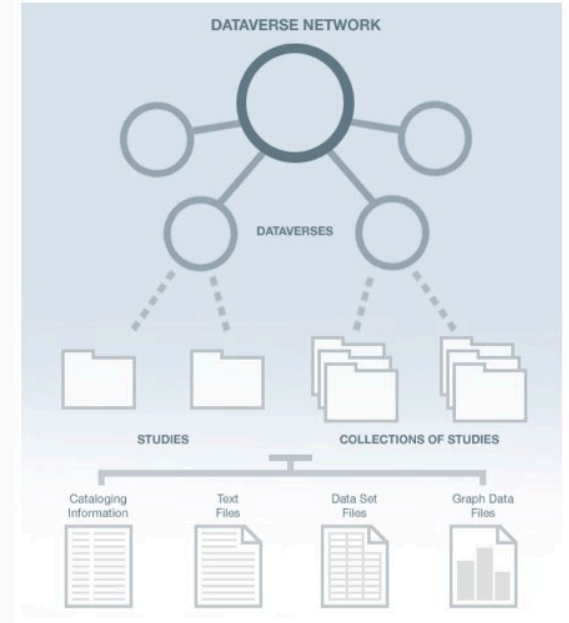
Follow Us: [f](#) [t](#) [in](#) [G+](#)



[About](#) [Contact Us](#) [FaQ](#) [Login](#)



Share, archive, and preserve your research data to improve quality of research



Status RIN

RIN Dataset

(Sept 2019)
Soft Launch 2018
Official Launch 2019

526

Dataverse

3.914

Published Dataset

6.795

Deposited Dataset

Promotion of RIN

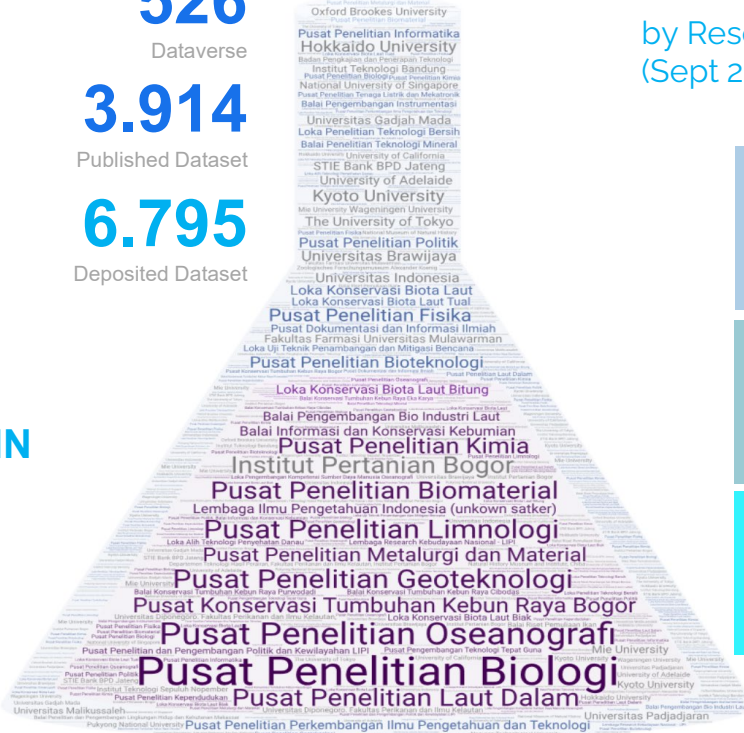
2019

41

Location

337

Institution



RIN Dataset

by Research Centers
(Sept 2019)

38	27
LIPI	Non LIPI
53	12
Domestic	Overseas
21	44
Universities	Non-Univ. Institutions

RIN Dataset

(Mei 2021)

1.183

Dataverse

4.014

Published Dataset

8.630

Deposited Dataset

29.296

Files

10%

Growth of data/month

RIN (Repositori Ilmiah Nasional, National Scientific Repository)



Search User Guide Support Sign Up Log In

RIN Dataverse Share, archive, and preserve your research data to improve quality of research

Metrics 65,015 Downloads

Contact Share

Repositori Ilmiah Nasional (RIN) merupakan sarana untuk berbagi, melestarikan, mengutip, mengeksplorasi, dan menganalisis data penelitian. Ini memudahkan membuat data tersedia bagi orang lain, dan memungkinkan Anda untuk meniru pekerjaan orang lain dengan lebih mudah. Peneliti, penulis data, penerbit, distributor data, dan institusi afiliasi semuanya menerima kredit akademis dan visibilitas web. Peneliti, Instansi, dan Pemberi Dana memiliki kendali penuh terhadap data penelitian.

Search this dataverse...



Advanced Search

+ Add Data

Datasets (84)

Files (13,558)

Dataverse Category

Research Group (31)

Research Project (20)

Organization or Institution (14)

Journal (11)

Researcher (6)

More...

Metadata Source

RIN Dataverse (3,655)

Lembaga Ilmu Pengetahuan Indonesia (LIPI)

Dataverse (268)

Repositori Ilmiah Nasional (RIN) Dataverse

(24)

Publication Date

2018 (3,857)

2019 (81)

2017 (9)

1 to 10 of 3,947 Results

Sort

Tingkat Efisiensi Produksi dan Pendapatan Usaha Kecil: Studi Pengolahan Ikan Asin di Kota Pekalongan

Mar 21, 2019



Sutanto, Himawan Arif, 2019, "Tingkat Efisiensi Produksi dan Pendapatan Usaha Kecil: Studi Pengolahan Ikan Asin di Kota Pekalongan", <https://doi.org/10.5072/RIN/NBKN1Y>, RIN Dataverse, V1, UNF:6.JxGgNmX4GhE0VizA5OyHZg==

Buku ini merupakan hasil kajian empiris penulis dari penelitian Hibah Pemula Dikti tahun 2013 dengan judul "Analisis Tingkat Efisiensi Produksi dan Pendapatan pada Usaha Pengolahan Ikan Skala Kecil di Kota Pekalongan". Topik pembahasan buku ini meliputi materi-materi yang disajikan...

IDENTIFIKASI METABOLIT SEKUNDER, UJI TOKSISITAS, DAN UJI ANTIOKSIDAN EKSTRAK KULIT BATANG TERAP (Artocarpus odoratissimus blanco)

Mar 14, 2019 - Laode Rijai Dataverse



Rijai, Laode, 2019, "IDENTIFIKASI METABOLIT SEKUNDER, UJI TOKSISITAS, DAN UJI ANTIOKSIDAN EKSTRAK KULIT BATANG TERAP (Artocarpus odoratissimus blanco)", <https://doi.org/10.5072/RIN/GRYNIM>, RIN Dataverse, V1

Prosiding MPC

IDENTIFIKASI METABOLIT SEKUNDER, UJI TOKSISITAS DAN UJI AKTIVITAS ANTIOKSIDAN EKSTRAK DAUN GAMAL (Gliricidia sepium)

Mar 14, 2019 - Laode Rijai Dataverse

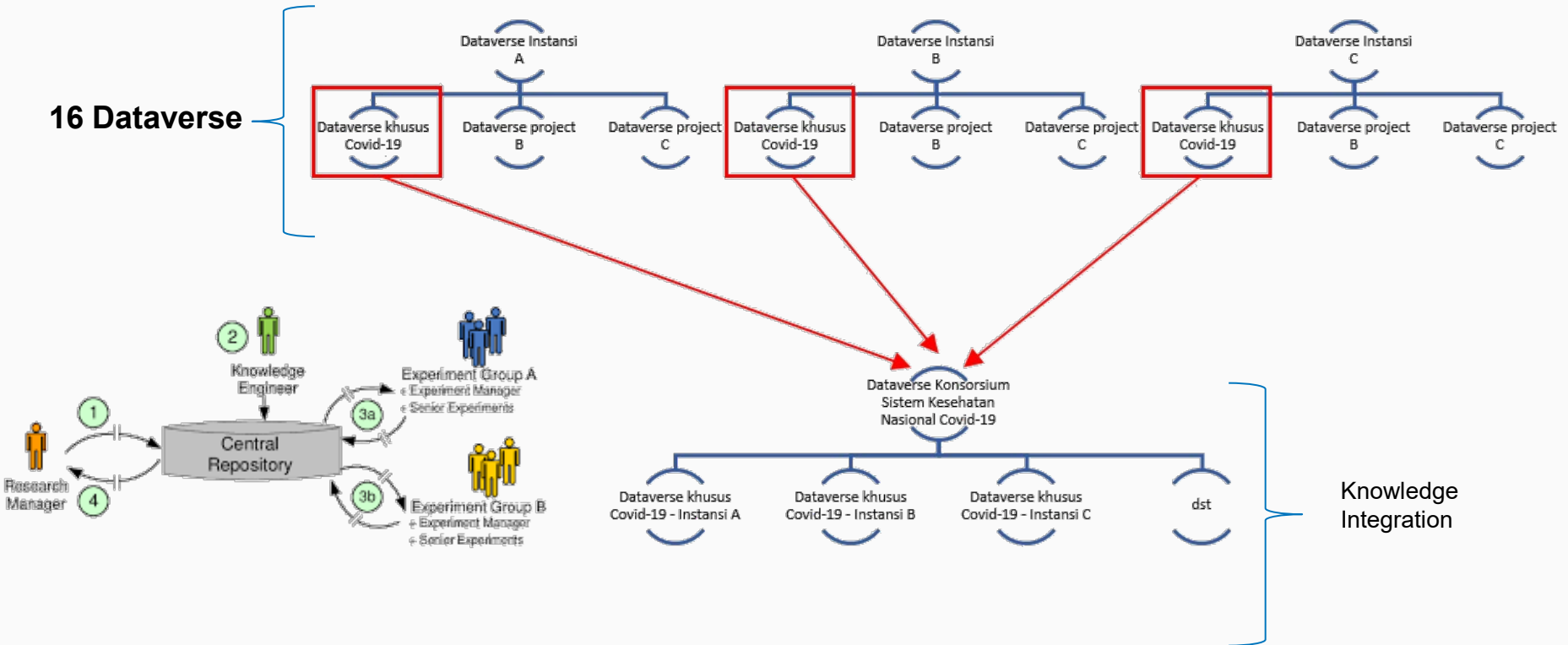


Rijai, Laode, 2019, "IDENTIFIKASI METABOLIT SEKUNDER, UJI TOKSISITAS DAN UJI AKTIVITAS ANTIOKSIDAN EKSTRAK DAUN GAMAL (Gliricidia sepium)", <https://doi.org/10.5072/RIN/LH7FWE>, RIN Dataverse, V1

Prosiding Seminar MPC

Dataverse for consortium of national health system for the pandemic

(built to respond to the covid-19 pandemic)



Next Agendas:

- Do not stop only at open access, but a wider openness, which is open science: citizen science, repository of communal intellectual property (indigenous knowledge), etc. and more reproducible research
- Opening more research infrastructures (human resource, institutional networks and software-hardware) to public
- Support the final draft of UNESCO's Recommendation of Open Science (May 2021) by adoption to the national regulation



COAR Confederation of
Open Access Repositories

COAR
ASIA **OA** 2021
MEETING

Terima kasih