

Singapore Management University

# Institutional Knowledge at Singapore Management University

---

17th AUNILo Meeting 2022

Country Reports Presentation Slides

---

## Country report: Cambodia

Chantraboth KIM

*Royal University of Law and Economics*

Follow this and additional works at: <https://ink.library.smu.edu.sg/aunilo2022>



Part of the [Collection Development and Management Commons](#)

---

KIM, Chantraboth. Country report: Cambodia. (2022). 17th AUNILo Meeting 2022. .

Available at: <https://ink.library.smu.edu.sg/aunilo2022/Reports/countryreports/9>

This Event is brought to you for free and open access by the SMU Libraries at Institutional Knowledge at Singapore Management University. It has been accepted for inclusion in 17th AUNILo Meeting 2022 by an authorized administrator of Institutional Knowledge at Singapore Management University. For more information, please email [cherylids@smu.edu.sg](mailto:cherylids@smu.edu.sg).



**ASEAN  
University  
Network**

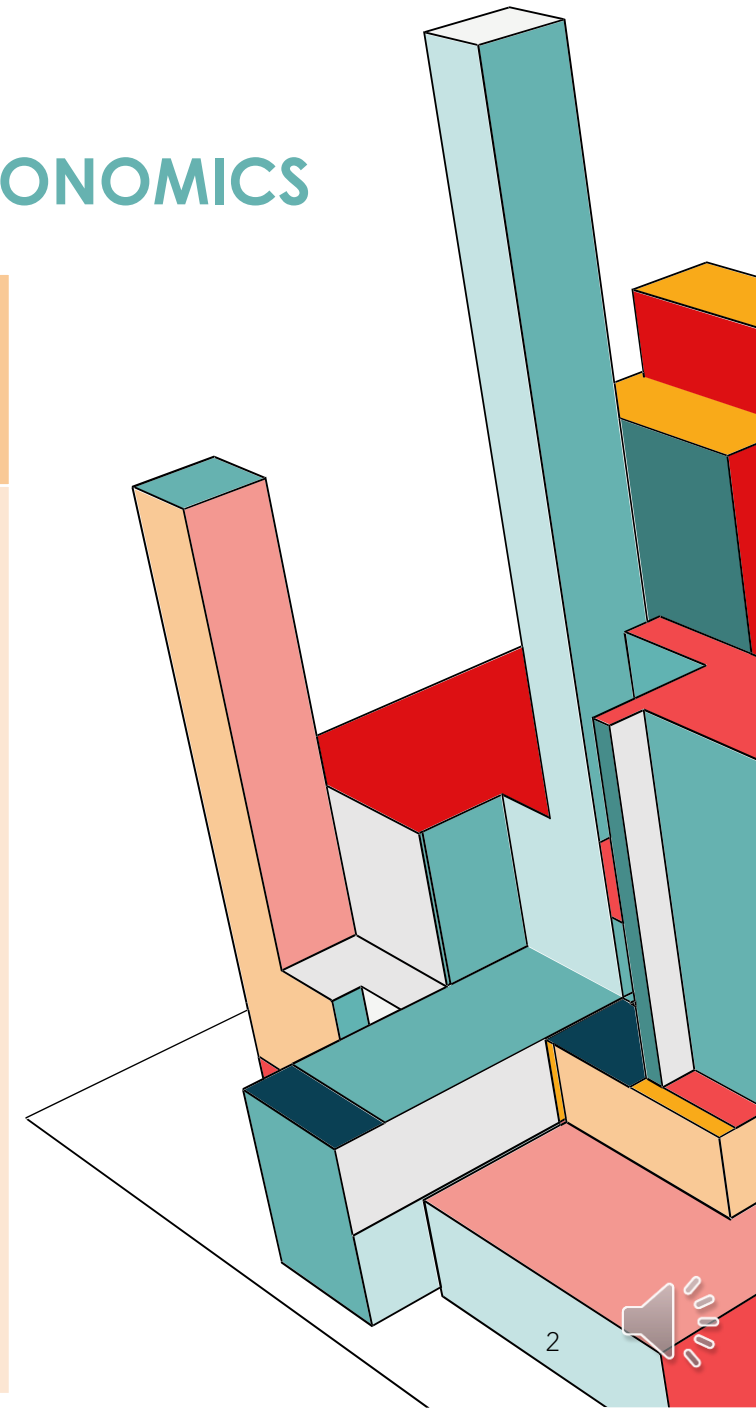
# 17<sup>TH</sup> AUNILO ANNUAL MEETING

## CAMBODIA COUNTRY REPORT



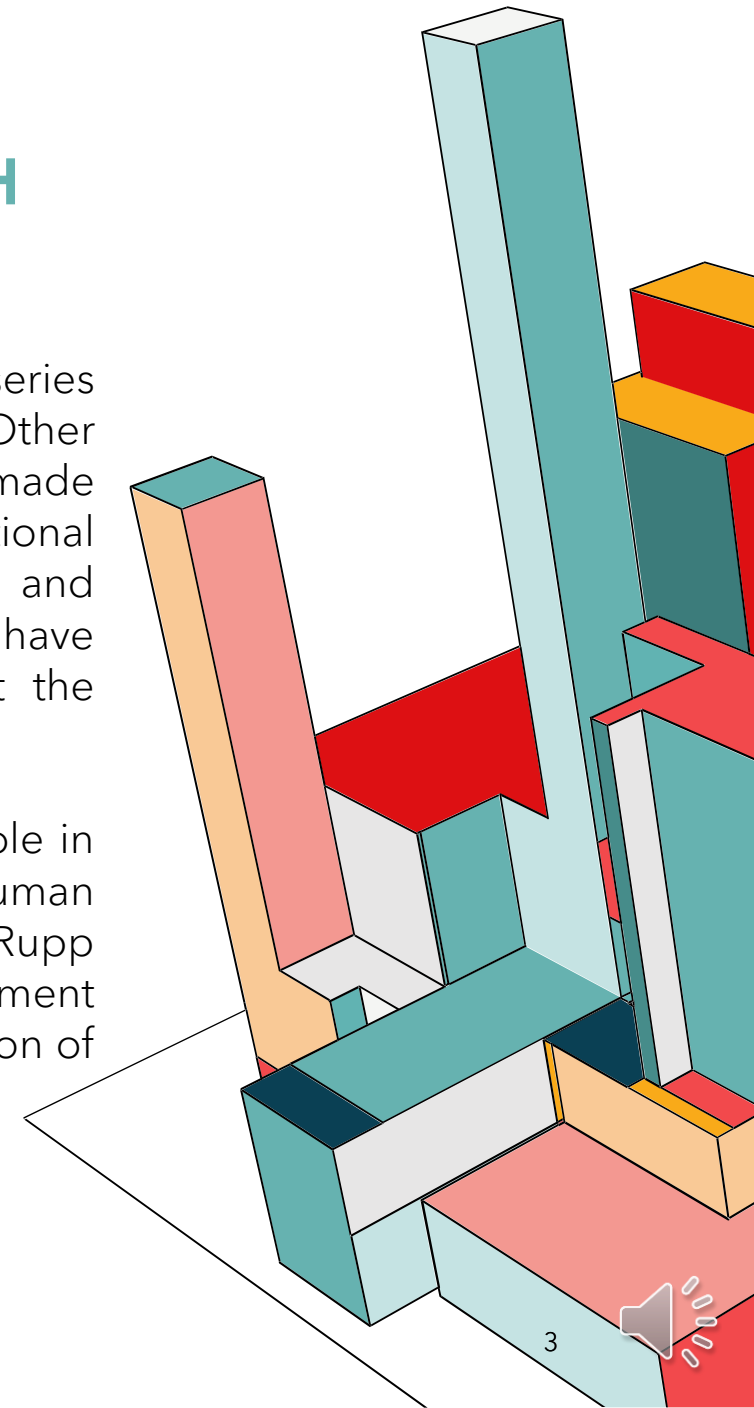
# BRIEF PROFILE OF ROYAL UNIVERSITY OF LAW AND ECONOMICS

1949-1975	1974-1994	1994-2003	2003-Present
The first higher education in Cambodia (Faculty of Law and Economic Sciences)	Unfortunately, the university was closed (1975-1979), and reopened in 1982 as the Administrative and Judicial School. In 1992 renamed the Faculty of Law.	In 1994, it was named again as the Faculty of Law and Economics and integrated into the Royal University of Phnom Penh under the control of the Ministry of Education.	Faculty was re-organized with university status and named the Royal University of Law and Economics (RULE) became a public administrative institution.



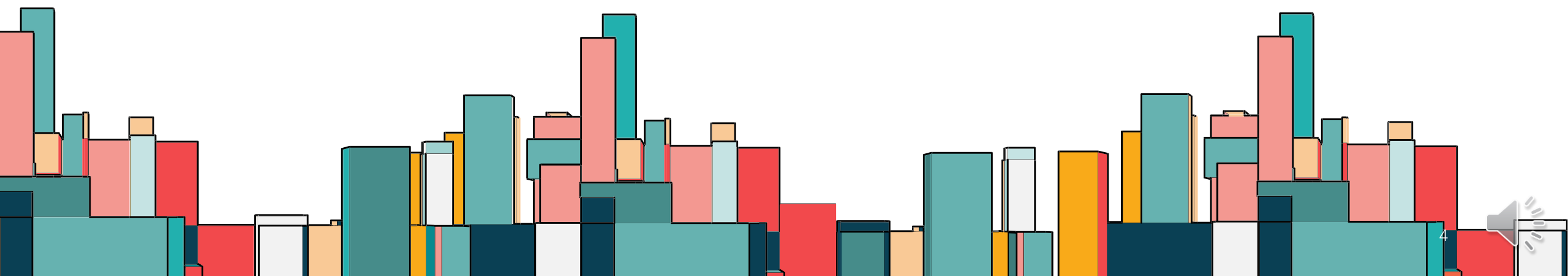
## BRIEF PROFILE OF ROYAL UNIVERSITY OF PHNOM PENH

- The Royal University of Phnom Penh (RUPP), founded in 1960, has undergone a series of transformations to become the leading national university in Cambodia. Other transformations are still happening. In the last five years, for example, RUPP has made considerable progresses in many areas including organizational structure, institutional governance, capacity building, infrastructure development, research, teaching and learning, curriculum development, and quality assurance. These achievements have encouraged RUPP management and faculty to strive harder to implement the institutional reform and achieve development goals.
- Looking towards the future, RUPP will grasp opportunities and assume a key role in driving Cambodia's socio-economic development through the creation of human capital and the provision of quality research, training and community service. Rupp aspires to contribute to the achievement of the 2030 and 2050 national development goals of the Royal Government of Cambodia as well as the higher education vision of the Ministry of Education, Youth, and Sport.



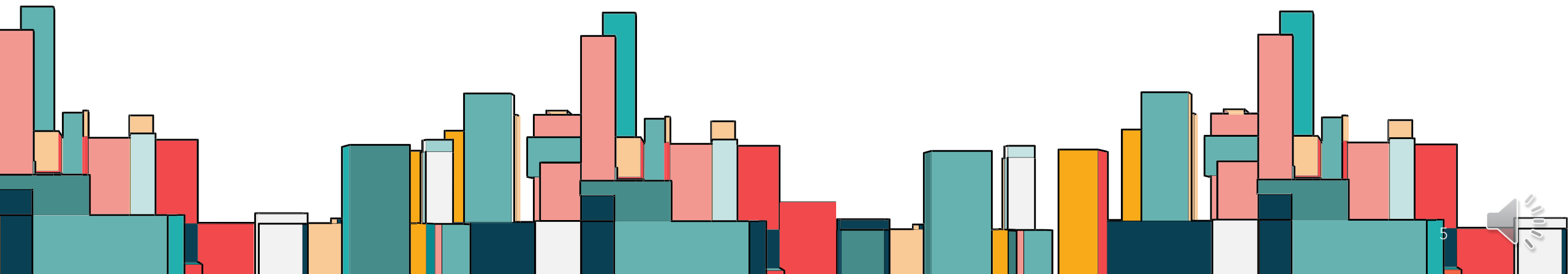
# RULE LIBRARY BACKGROUND

- The Royal University of Law and Economics library was established during the 80s as a center for archives for students and lecturers. The state of the library is constantly evolving from time to time, from the very limited resources available to the rich, the rich and the technologically advanced.
- The Royal University of Law and Economicis Library is located on the second, third and fourth floors of the campus "I". Located in a newly built building, the library is completely refurbished, with a large space, complete with state-of-the-art facilities and a wealth of documentation resources. In addition, the library has freely used the internet to facilitate the research of students and professors.
- As a research archive, the library runs its activities six days a week, Monday through Saturday, and 11 hours a day, from 8:00 am to 7:00 pm.



# HSL BACKGROUND

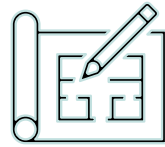
- The Hun Sen Library (HSL), Royal University of Phnom Penh, was opened on the 7th of January 1997.
- Also get support from Europe, United States and Japan
- 2011 get financial support from the World Bank and Ministry of Education Youth and Sport.
- With this support is another step in the provision of excellent library facilities at the RUPP.
- The HSL now has a total floor area of 4,160 sq. meters and has seating for 500 users at one time.
- The Library is equipped with modern facilities and an attractive and comfortable environment for library users seeking information and knowledge.
- As of 2012, HSL has a collection of more than 100,000 volumes in Khmer, English and French, and some volumes in Japanese, Thai, Chinese and Vietnamese, as well as smaller collections of videos, audio cassettes, CDs/DVDs and electronic resources.
- The HSL has a full-time staff of 23, including two foreign assistants. Almost 800 students use the library each day.



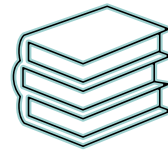
# LIBRARY RULE IN NUMBER



3 Libraries



3,600 square meter



32,248 items



11 Librarians



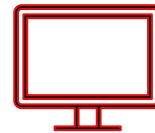
9,862 Members



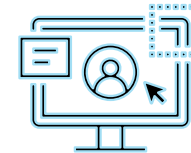
4 Corners



20 Databases



3,014 eBooks



30,000+ Online user



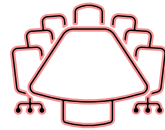
500+ Students /day



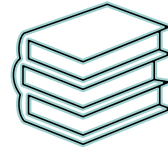
# HSL IN NUMBER



1 Building



1 Library



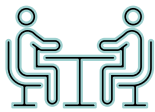
100,000 items



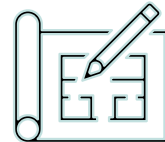
23 Librarians



500 Seats / time



800+ Students /day



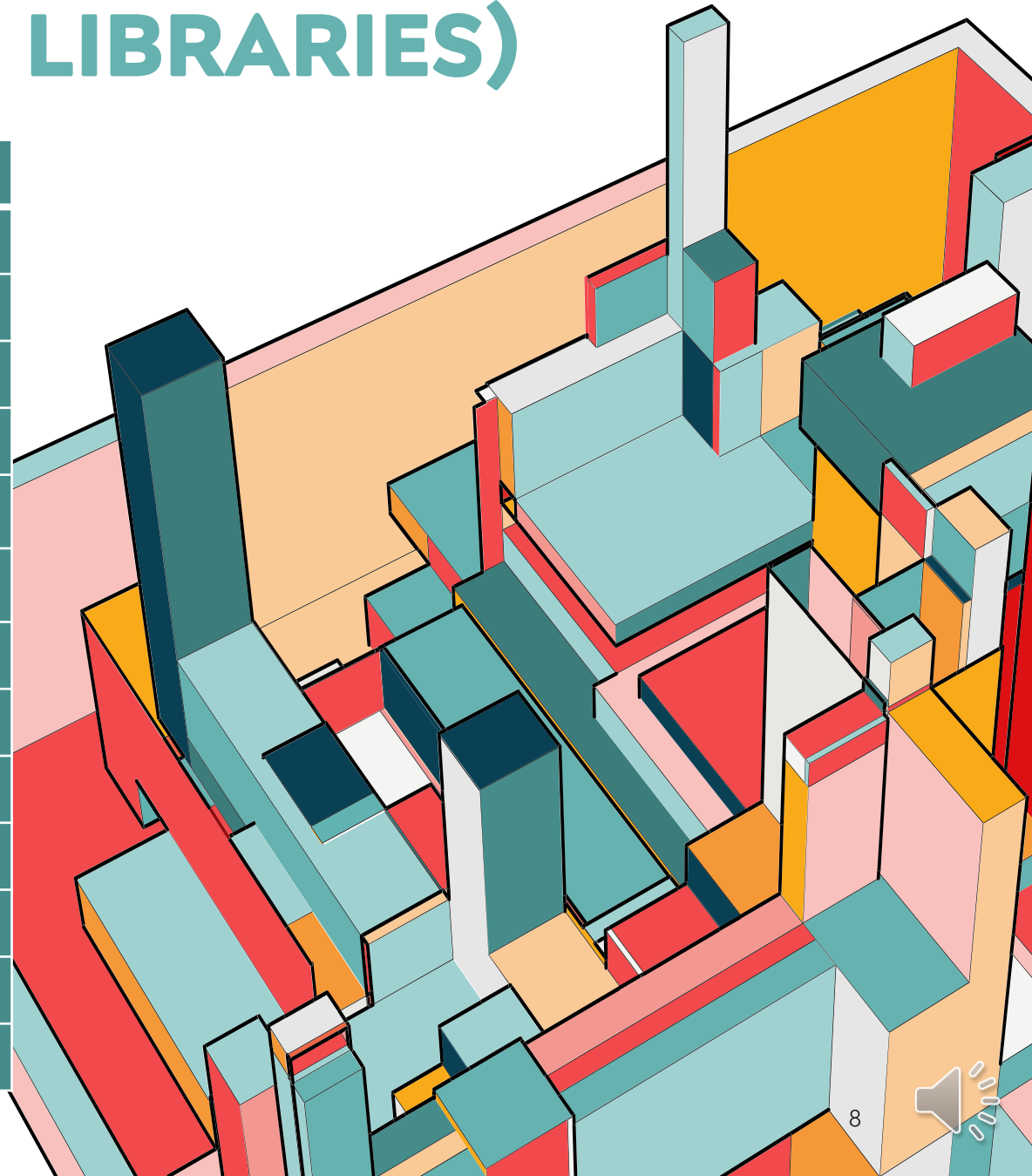
4160 square meter





# LIBRARY SERVICES (BOTH LIBRARIES)

Library Services	RULE	HSL
Library Card	√	√
Circulation	√	√
Online access eBooks	√	√
Library Mobile App.	√	
Telegram Channel	√	
Database	√	√
Library Information Services	√	√
Study facilities ( selfstudy room)	√	
Information literacy class	√	√
Library orientation	√	√
Library Training Program (Partner)	√	√
Resarch support	√	√
Short coure (Student Center)	√	



# SPACE DESIGN, SERVICES AND ARRANGEMENT

For both library are following the ACC standard (Accreditation Committee of Cambodia), space and design of each library base on the shapes and sizes.

In fact, few building projects are as complex as a library in terms of mixed audience, equipment and purpose. for both libraries have studied the way people move through library spaces, which way they turn, how far they go, where they stop. In addition, create an interior design which is easy to manage for library staff so they can spend more time with students or customers.



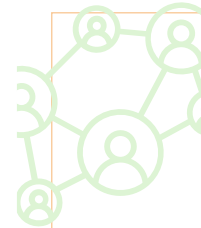
# SPACE DESIGN AND ROLE OF LIBRARY

For both libraries are take three main reasons before design, arrange space and services for user, those main objective are:



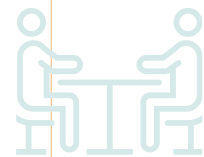
## Learning Center

- Provide space and equipment for student
- Provide technical support for student



## Student Consultation

- Support student when they need
- Research support for student



## Teacher Support Center

- Provide teacher support in term of documentation etc.
- Online learning support for teacher



# SPACE ARRANGE AND CORNER (RULE)

New Corner arrangement in 2022

## Asian Corner

RULE is the host library for ASIAN corner, which is in Economics library (under process of arrangement)

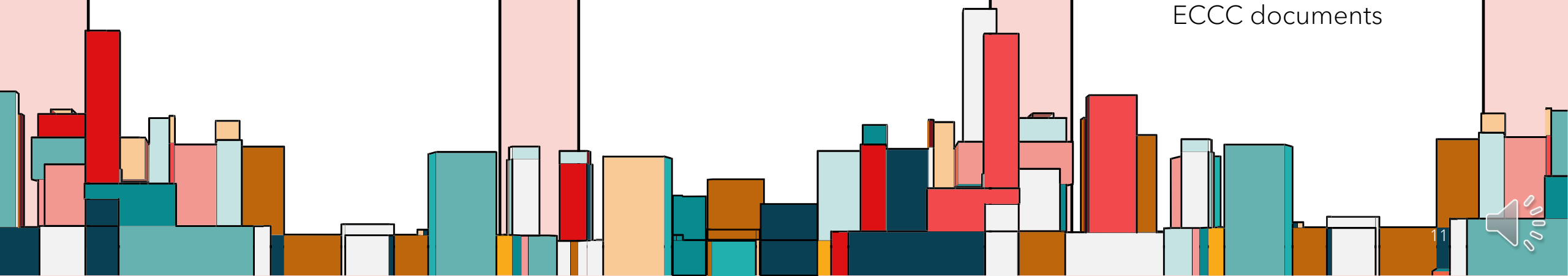
## India Corner

Located in Law library, this corner is sponsor by India Embassy

## ECCC Corner

(Extraordinary Chambers in the Courts of Cambodia)

This is the special corner for legal students and researcher, this corner is specialized for ECCC documents



# SPACE ARRANGE AND CORNER (HSL)

## ERC

### Educational Resources Center (ERC)

The ERC is a specialized research collection that has been developed for researchers and readers interested or involved in education, policy planning and education provision in Cambodia. This collection includes both printed and digital resources.

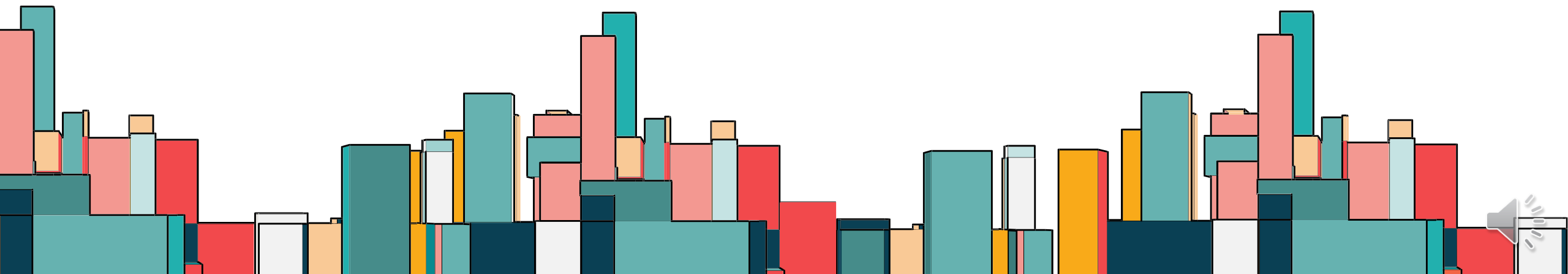
## Cambodiana Collection

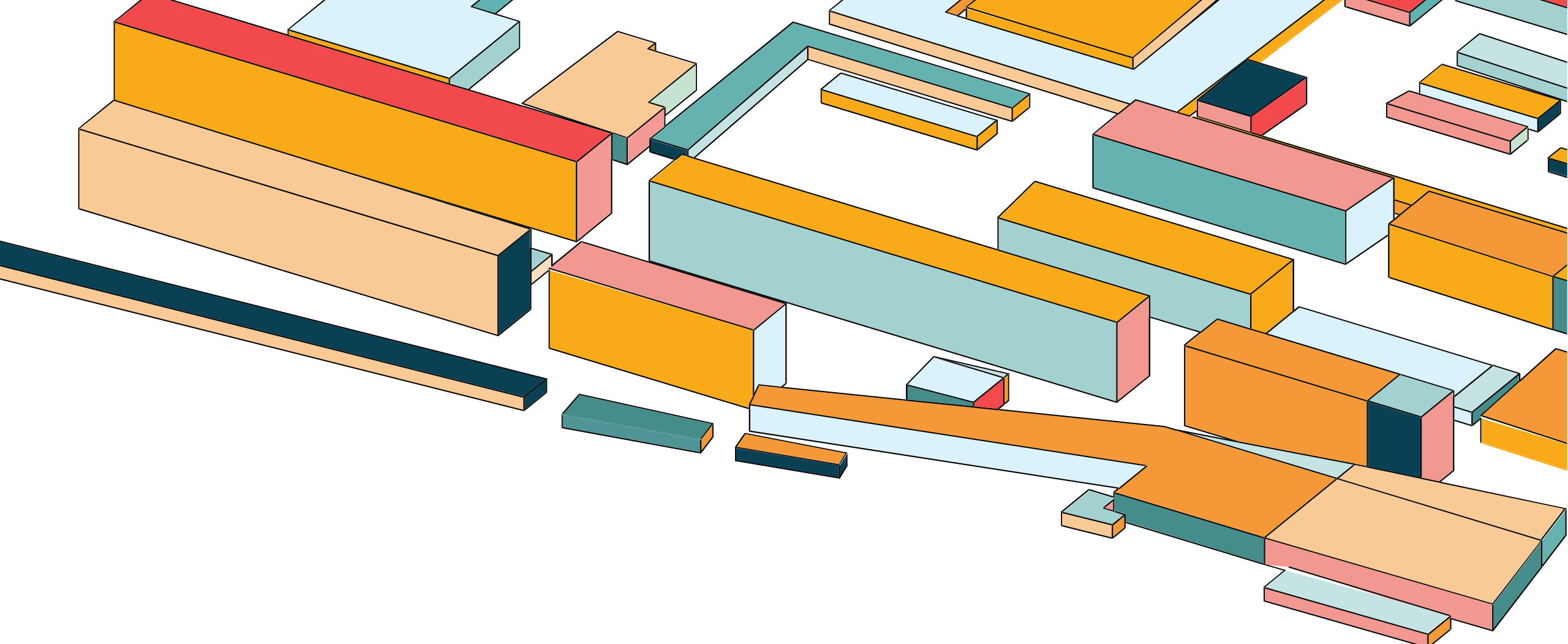
The Cambodiana collection is a specialized research collection of around 3,500 books and documents relating to the culture and history of Cambodia, including books by Cambodians, and books published in Cambodia or about Cambodia. In addition the following resources are available for consultation on request:



# USER ORIENTATION CHALLENGE

- For both libraries we have library orientation for student every month, because of library provide varieties of services to students, that's why not many student know how to use all libraries services: In here we classify user in to three level there are: basic, intermedia, and advance:
  - Basic user: Teaching user to know about libraries services
  - Intermedia user: Teaching user how to use all the services
  - Advance user: Provide training user with technical course





**THANKS!**

