

Singapore Management University

## Institutional Knowledge at Singapore Management University

---

Research Collection Office of Corporate  
Communications and Marketing

Office of Corporate Communications and  
Marketing

---

1-2014

### 10 Tips for Choosing Your University – SMU Infographics

Singapore Management University

Follow this and additional works at: [https://ink.library.smu.edu.sg/occm\\_research](https://ink.library.smu.edu.sg/occm_research)



Part of the [Communication Commons](#), and the [Higher Education Commons](#)

---

#### Citation

Singapore Management University. 10 Tips for Choosing Your University – SMU Infographics. (2014).  
Available at: [https://ink.library.smu.edu.sg/occm\\_research/6](https://ink.library.smu.edu.sg/occm_research/6)

This Report is brought to you for free and open access by the Office of Corporate Communications and Marketing at Institutional Knowledge at Singapore Management University. It has been accepted for inclusion in Research Collection Office of Corporate Communications and Marketing by an authorized administrator of Institutional Knowledge at Singapore Management University. For more information, please email [cherylds@smu.edu.sg](mailto:cherylds@smu.edu.sg).

# 10 TIPS FOR CHOOSING YOUR UNIVERSITY



What is the most important thing to you when choosing a university? The programme and curriculum? Location? Career prospects? Or is it the student life and environment that the institution offers?

We know how tough the process is, so we've come up with a list to help you make that all-important decision.

Regardless of which option you pick, the process of choosing the right university can be overwhelming and challenging as you sift through voluminous information and try to answer all those questions popping inside your head.

Ultimately, the right choice is one that not only meets your interest and ability, but also provides a balance between all of your expectations. So here goes...

## 1 WHAT ARE YOU INTERESTED IN?

Is your favourite subject economics or mathematics? Or are you into the arts? Pick a programme that you can see yourself studying, and enjoying.



**70%**  
of SMU students do a  
**DOUBLE DEGREE  
OR SECOND MAJOR**

You can pick from 15 double degree combinations or 21 second majors!

## 2 ARE YOU ELIGIBLE FOR THE PROGRAMMES YOU ARE INTERESTED IN?



Check out about the requirements for the programme you're interested in, and find out how you will be evaluated and assessed.

To find out the entry requirements for SMU programmes, visit <http://admissions.smu.edu.sg/apply/admissions-requirements>

## 3 CONSIDER THE CAREER PATHS YOU MIGHT BE INTERESTED IN

Studying a programme you're interested in and choosing that path as a career might not always match. Apart from thinking of what you want to study, think about what you would like to do too.



## 4 WHAT ABOUT EMPLOYABILITY?

FROM THE 2012 GRADUATE EMPLOYMENT SURVEY

SMU graduates registered a robust

**EMPLOYMENT RATE OF 92%**

AND HIGHER STARTING SALARIES

What's next after graduation? Finding a good job of course! Instead of focusing on the rankings of the university, find out the employability of their graduates and where they are employed to have a better gauge of how your future will pan out.

**75% CLINCHED JOBS WITHIN ONE MONTH OF GRADUATION**

**61% RECEIVED TWO TO SIX JOB OFFERS PER PERSON**

## 5 ASK!

Visit the university's website to find out more. Try to gather feedback and testimonials from your seniors and students from the universities.

Do not hesitate to contact the programme coordinators with questions and seek advice from the admissions team.



**QUESTIONS?**

CONTACT OUR FRIENDLY SMU UNDERGRADUATE ADMISSIONS TEAM

CALL (+65) 6828-0980 OR EMAIL [ADMISSIONS@SMU.EDU.SG](mailto:ADMISSIONS@SMU.EDU.SG)

## 6 WHAT OTHER FACTORS ARE IMPORTANT TO YOU?

The programme you want might be offered in many universities. Since you'll be staying in the school you choose for at least three years, do consider other factors that are important too, such as location and accessibility, development of soft skills and class size.

HOLISTIC EDUCATION?

ACCESSIBILITY?

EMPLOYABILITY?

RELEVANCE?

## 7 WHY ARE INTERNSHIPS AND OVERSEAS EXCHANGE PROGRAMMES IMPORTANT?

Find out if the university provides opportunities for overseas exposure for the programme you're interested in. Overseas exposure and internships expand your horizon and allow you to experience different learning environments.

SMU aims to provide

**EQUAL OPPORTUNITY**

for every student to take up a

**GLOBAL EXPOSURE PROGRAMME**

More than

**84% OF SMU STUDENTS TRAVEL ABROAD.**

The 2013 graduating cohort have gone for at least one such programme.

We have exchange programmes with

**218**

**OVERSEAS UNIVERSITIES**

Students travel to

**>20**

**COUNTRIES FOR COMMUNITY SERVICE**



All our students complete a minimum of

**10 WEEKS**

of internship, with more than

**50% OF THE STUDENTS**

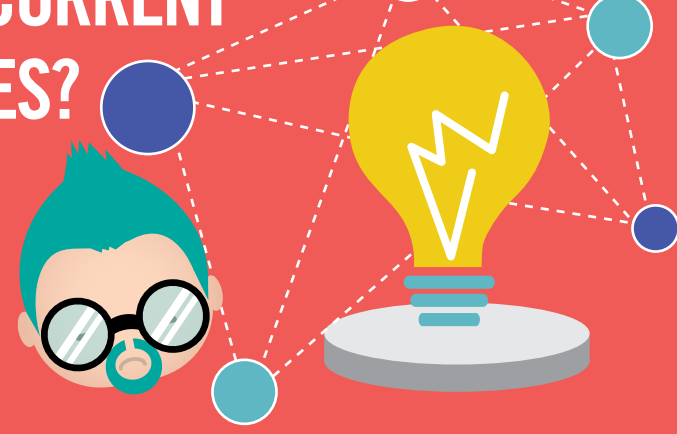
having done 2 TO 6 internships.

**>10,000**

**COMPANIES EMPLOY SMU INTERNS!**

## 8 HOW RELEVANT AND CURRENT ARE THE PROGRAMMES?

Besides academics, find out if the faculty members are also successful industry practitioners, so that they can add value to you by providing insights on real-world developments and situations.



## 9 GET A LIFE!

All work and no play makes Jack a dull boy. After all, tertiary life is not just about studying – taking part in CCAs is also the perfect chance for you to learn new skills and make new friends outside of your school.

FIND OUT HOW VIBRANT, EXCITING AND DIVERSE SMU STUDENT LIFE IS HERE

[HTTP://ADMISSIONS.SMU.EDU.SG/CONTENT/VIBRANT-STUDENT-LIFE](http://admissions.smu.edu.sg/content/vibrant-student-life)



## 10 SEE IT FOR YOURSELF!

Check out the open house of the university you're interested in to get a feel of how vibrant the campus is, and take the opportunity to speak to the programme managers and students.



**SMU OPEN HOUSE 1 & 2 MARCH 2014**

IF YOU'RE UNABLE TO VISIT THE CAMPUS, EXPLORE ONLINE AT [HTTP://ADMISSIONS.SMU.EDU.SG](http://admissions.smu.edu.sg)

OR WATCH OUR VIDEOS ON YOUTUBE.

CONNECT WITH US ON [f](#) [t](#) [g+](#) [p](#) [i](#) [in](#) [You Tube](#)

For information on admissions, please visit [admissions.smu.edu.sg](http://admissions.smu.edu.sg)

SOURCES

Brought to you by the Office of Corporate Communications and Marketing, Singapore Management University [www.smu.edu.sg](http://www.smu.edu.sg)

Accurate as of 23-01-2014.

